

# How to Rotate Annotated Text in ggplot2 (With Example)?

Authored by  
**stats writer**

November 28, 2025

## RECOMMENDED CITATION

stats writer (2025). *How to Rotate Annotated Text in ggplot2 (With Example)?*.  
PSYCHOLOGICAL SCALES. Retrieved from <https://scales.arabpsychology.com/?p=101265>

To rotate annotated text in ggplot2, use the `angle` argument in the `geom_text` function. This requires adding the `angle` argument to the `geom_text()` call within the `aes()` function, and specifying the angle by which you would like the text to be rotated. For example, if you wanted to rotate the annotated text by 45 degrees, you would specify `angle = 45`. The syntax of this command would look like this: `geom_text(aes(angle = 45))`. This will rotate the annotated text in the plot by 45 degrees.

You can use the following basic syntax to rotate annotated text in plots in ggplot2:

```
ggplot(df) +  
geom_point(aes(x=x, y=y)) +  
geom_text(aes(x=x, y=y, label=group), hjust=-0.3, vjust=-0.1, angle=45)
```

In this particular example we use the **angle** argument to rotate the annotated text 45 degrees counterclockwise and the **hjust** and **vjust** arguments to increase the horizontal and vertical distance of the text from the points in the plot.

The following example shows how to use this syntax in practice.

## Example: Rotate Annotated Text in ggplot2

Suppose we have the following dataset in R:

```
#create data frame  
df <- data.frame(player=c('Brad', 'Ty', 'Spencer', 'Luke', 'Max'),  
points=c(17, 5, 12, 20, 22),  
assists=c(4, 3, 7, 7, 5))
```

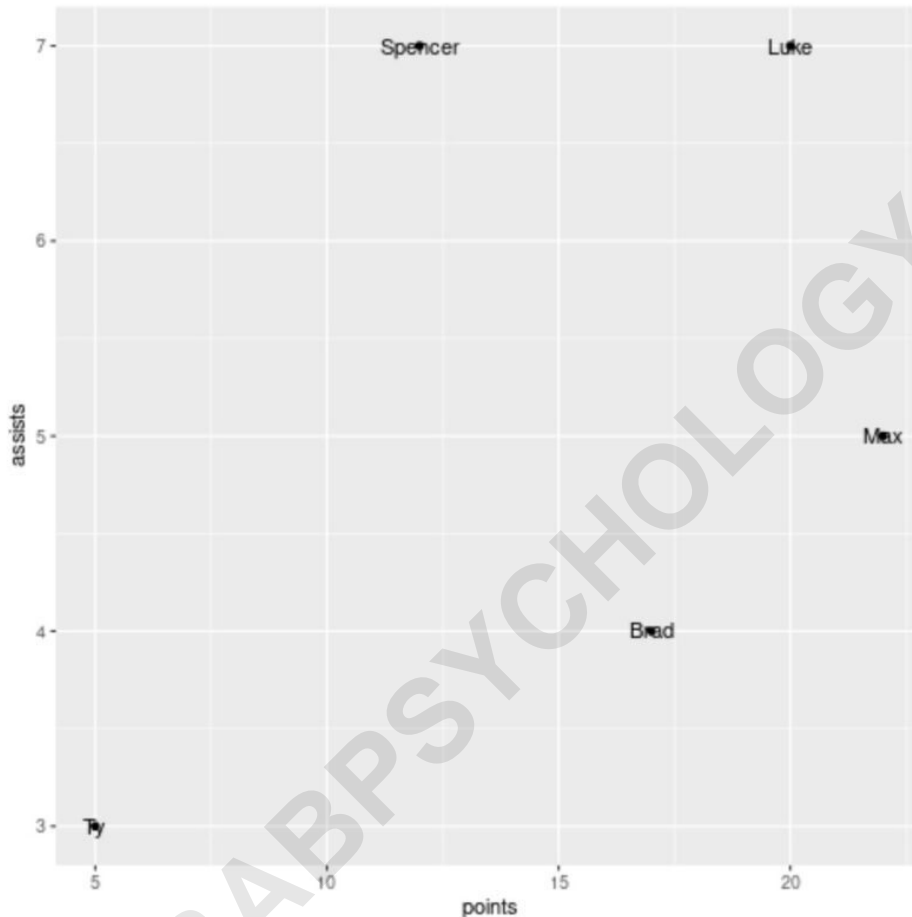
```
#view data frame  
df
```

```
player points assists  
1 Brad 17 4  
2 Ty 5 3  
3 Spencer 12 7  
4 Luke 20 7  
5 Max 22 5
```

Now suppose we create the following scatter plot in ggplot2 to visualize this data:

**library(ggplot2)**

```
#create scatter plot with annotated labels  
ggplot(df) +  
geom_point(aes(x=points, y=assists)) +  
geom_text(aes(x=points, y=assists, label=player))
```



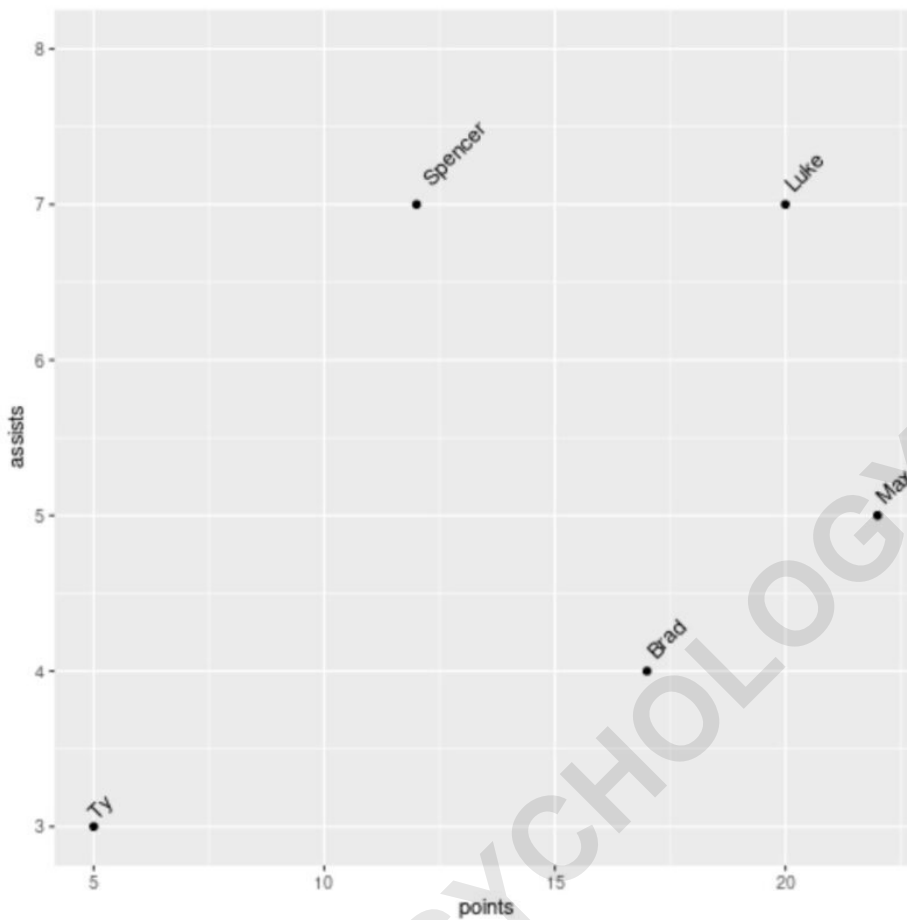
Notice that the labels are horizontal and located directly on top of the points.

We can use the following syntax to rotate the labels and move them slightly further from the points to make them easier to read:

**library(ggplot2)**

```
#create scatter plot with annotated rotated labels  
ggplot(df) +  
geom_point(aes(x=points, y=assists)) +  
geom_text(aes(x=points, y=assists, label=player), hjust=-.3, vjust=-.1, angle=45) +
```

```
ylim(3, 8)
```



Notice that the labels are now all rotated 45 degrees counterclockwise.

Feel free to play around with the **hjust**, **vjust**, and **angle** arguments to get your annotated text in whatever position you'd like on the plot.

**Note:** We also used the **ylim** argument to on the plot so the label "Spencer" at the top of the plot wasn't cut off.