

# How do I create a double bar graph in Google Sheets?

Authored by  
**stats writer**

May 15, 2024

## RECOMMENDED CITATION

stats writer (2024). *How do I create a double bar graph in Google Sheets?*.

PSYCHOLOGICAL SCALES. Retrieved from <https://scales.arabpsychology.com/?p=144221>

Creating a double bar graph in Google Sheets is a simple process that allows you to visually represent and compare two sets of data. To begin, you will need to enter your data into a spreadsheet and organize it into two columns. Then, you can select the data and click on the "Insert" tab, followed by "Chart." From there, choose the "Chart type" as "Bar chart" and select the double bar graph option. You can customize your graph by adding labels, changing the colors, and adjusting the axis. This will allow you to effectively display and analyze your data in a clear and organized manner. With its user-friendly interface, Google Sheets makes it easy to create a double bar graph for any project or presentation.

## Create a Double Bar Graph in Google Sheets

**A double bar graph is useful for visualizing two datasets on one graph.**

**The following step-by-step example shows how to create a double bar graph in Google Sheets.**

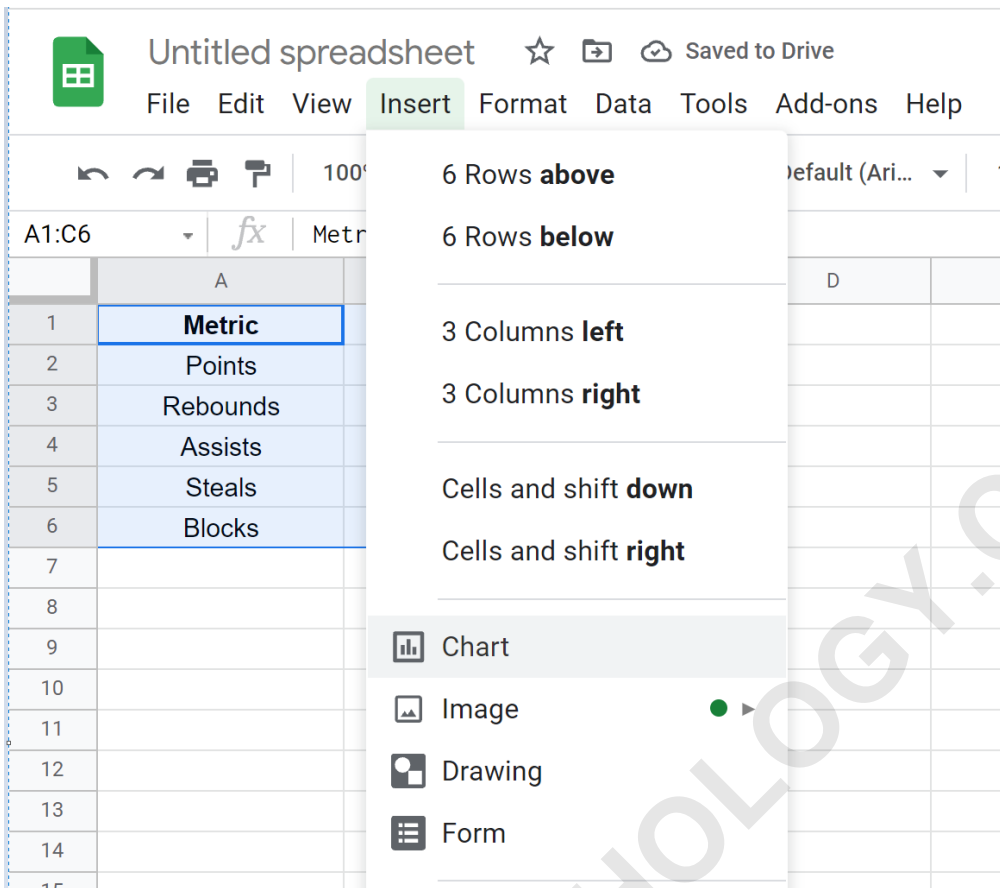
### Step 1: Enter the Data

**First, let's enter the values for the following dataset:**

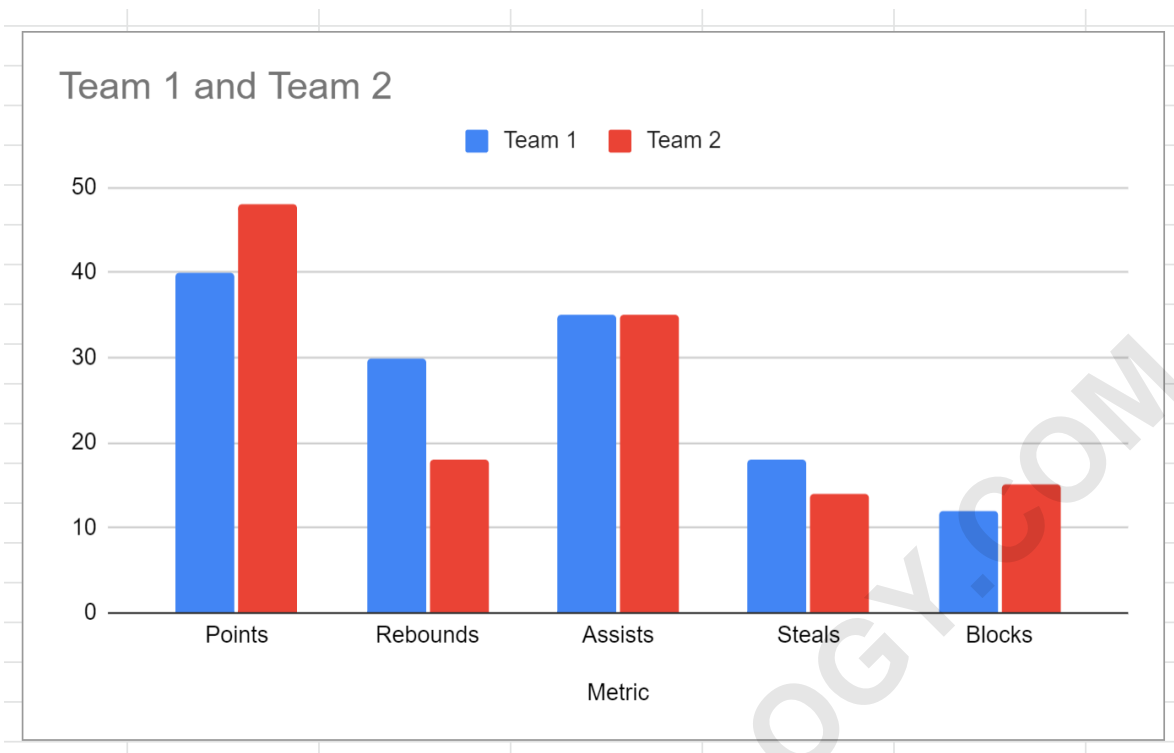
	A	B	C	D	E
1	<b>Metric</b>	<b>Team 1</b>	<b>Team 2</b>		
2	Points	40	48		
3	Rebounds	30	18		
4	Assists	35	35		
5	Steals	18	14		
6	Blocks	12	15		
7					
8					
9					
10					
11					
12					
13					
14					
15					
16					
17					
18					
19					

## Step 2: Create the Double Bar Graph

To create a double bar graph for this dataset, we can first highlight the values in the range A1:C6. Then click the Insert tab, then click Chart:



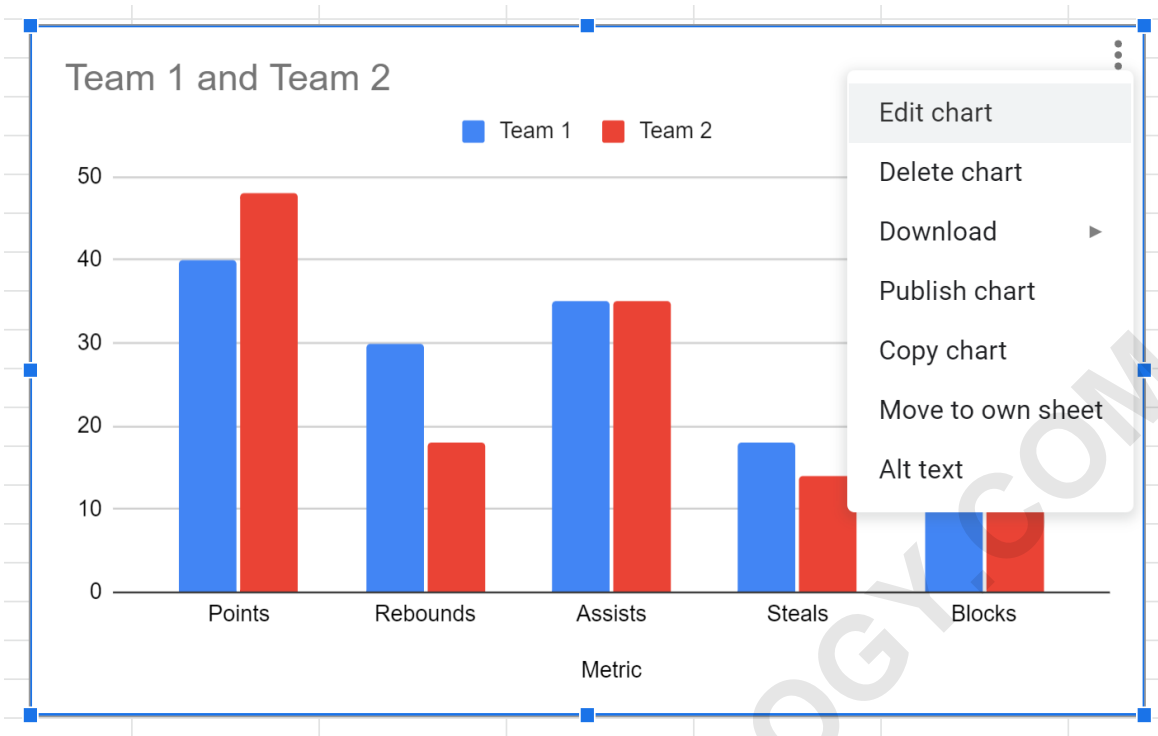
**The following double bar graph will appear:**



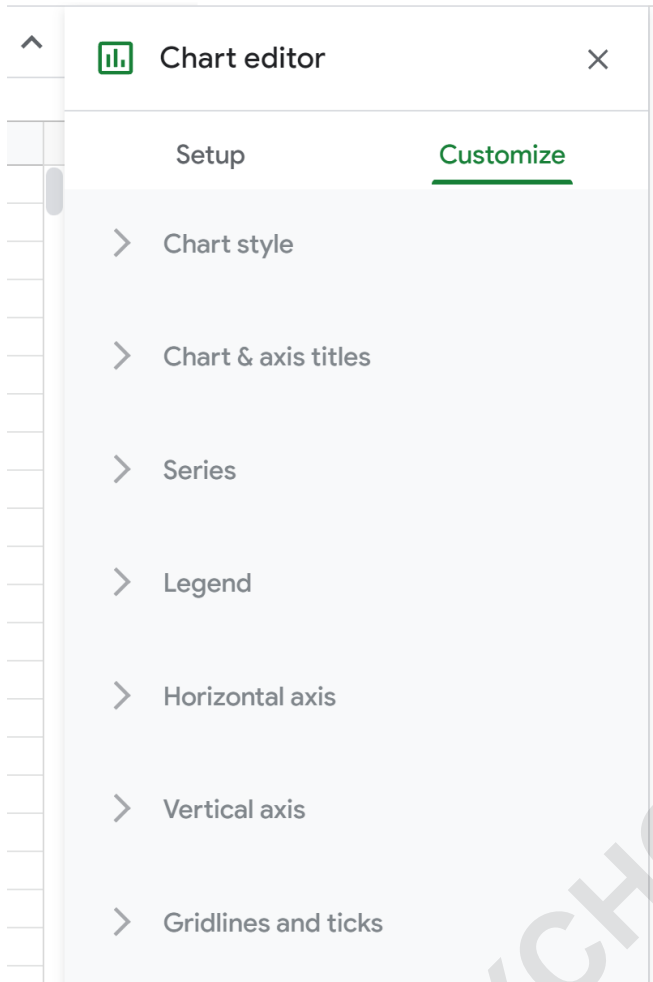
**The x-axis displays the various metrics and the y-axis shows the values of those metrics for both Team 1 and Team 2.**

### Step 3: Customize the Double Bar Graph

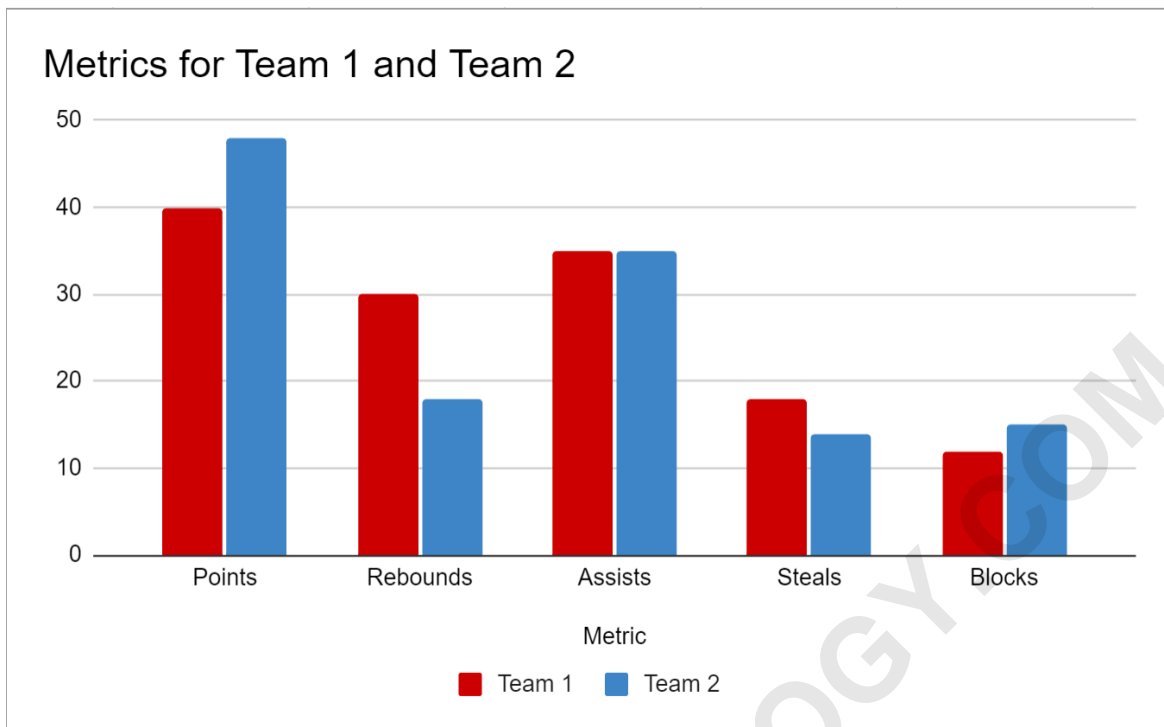
**To customize the graph, first click anywhere on the graph. Then click the three vertical dots in the top right corner. Then click Edit chart:**



**In the Chart editor panel that appears on the right side of the screen, click the Customize tab to see a variety of options for customizing the appearance of the chart:**



**For example, we can change the chart title, the colors of the bars, and the location of the legend:**



**Feel free to modify the chart in any way you'd like so that it looks best for your particular situation.**

**The following tutorials explain how to create other common charts in Google Sheets:**