

How do I create a Candlestick Chart in Google Sheets?

Authored by
stats writer

May 14, 2024

RECOMMENDED CITATION

stats writer (2024). *How do I create a Candlestick Chart in Google Sheets?*.

PSYCHOLOGICAL SCALES. Retrieved from <https://scales.arabpsychology.com/?p=144098>

A Candlestick Chart is a visual representation of stock market data that displays the price movements of a particular stock or asset over a specific period of time. To create a Candlestick Chart in Google Sheets, follow these steps:

1. Open a new Google Sheets document and enter your data in the desired format.
2. Highlight the data that you want to include in the chart.
3. Click on the "Insert" tab at the top of the document and select "Chart" from the drop-down menu.
4. In the Chart Editor, select "Candlestick chart" as the chart type.
5. Customize the chart by selecting the desired options for labels, axes, and data points.
6. Once satisfied with the chart, click "Insert" to add it to your Google Sheets document.

Overall, creating a Candlestick Chart in Google Sheets is a simple and efficient way to visually analyze stock market data and track price trends.

Create a Candlestick Chart in Google Sheets (Step-by-Step)

A is a type of financial chart that displays the price movements of securities over time.

The following step-by-step example shows how to create a candlestick chart in Google Sheets.

Step 1: Enter the Data

First, let's enter the prices for a dataset that show the low, open, close, and high price for a certain stock during an 8-day period:

	A	B	C	D	E	
1	Date	Low	Open	Close	High	
2	1/1/2021	22	25	24	28	
3	1/2/2021	16	22	20	27	
4	1/3/2021	14	21	17	29	
5	1/4/2021	17	19	23	25	
6	1/5/2021	19	23	22	24	
7	1/6/2021	18	21	25	26	
8	1/7/2021	22	25	29	31	
9	1/8/2021	26	29	31	37	
10						
11						
12						
13						
14						
15						
16						
17						
18						
19						
20						

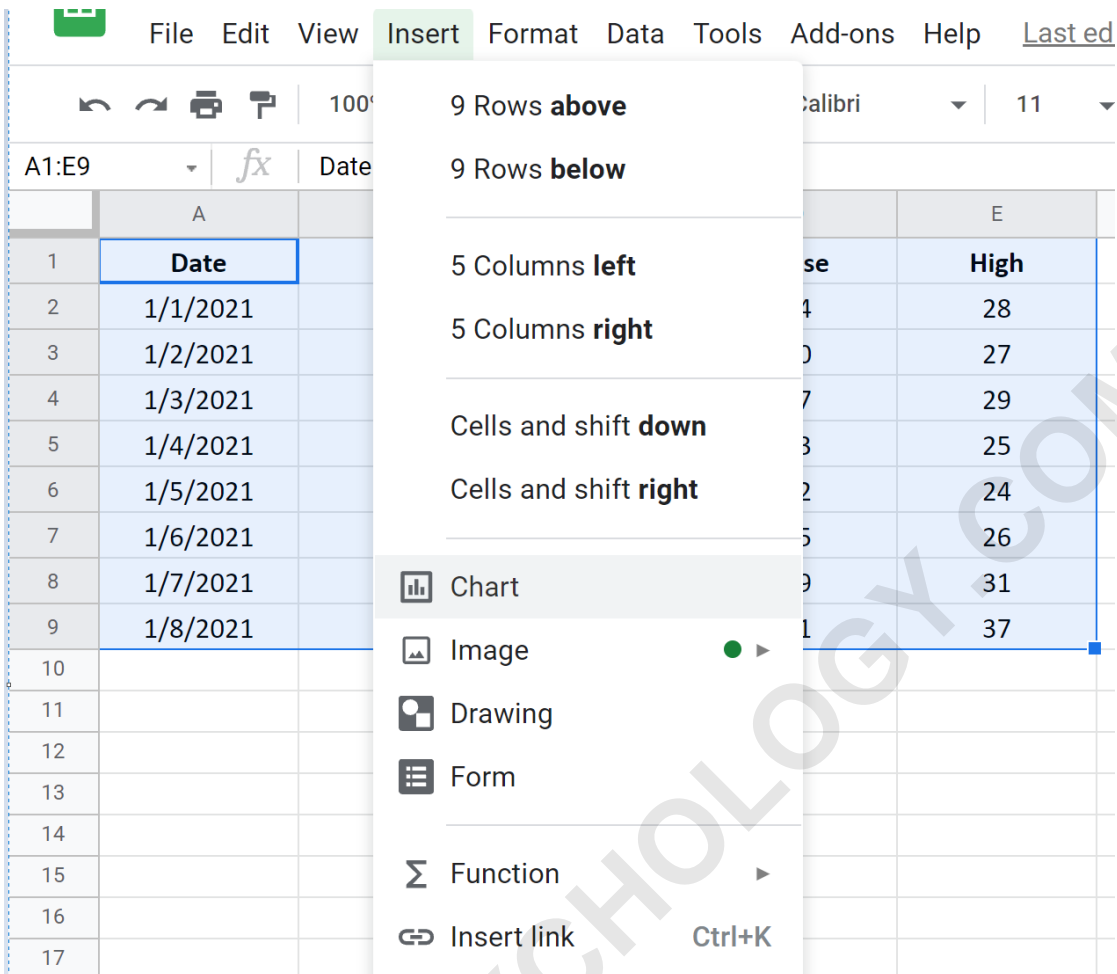
Note: The Date column should be in Plain text format. If it is not, simply highlight the Date column, then click the Format tab, then click Number, then click Plain text.

Step 2: Create the Candlestick Chart

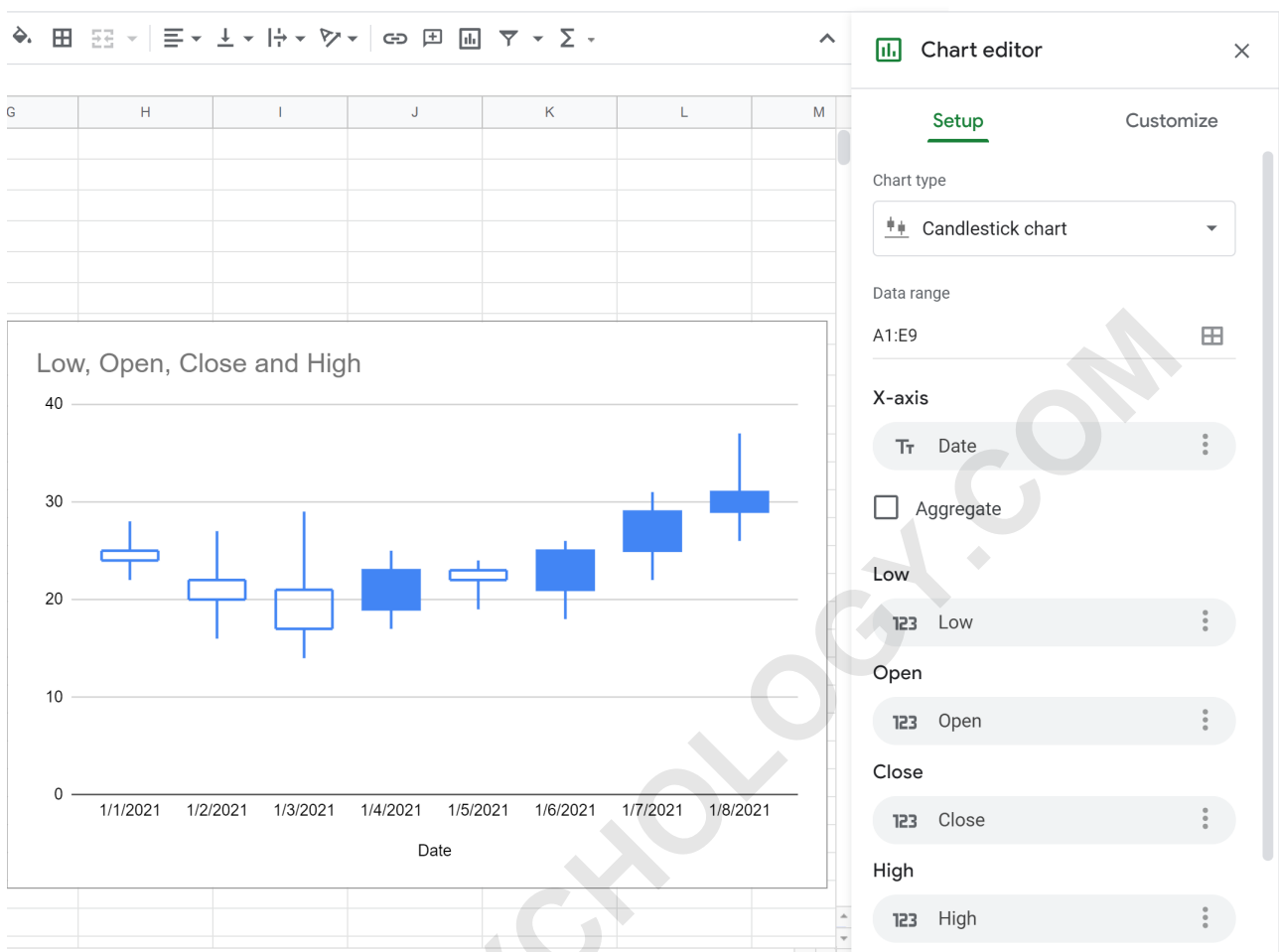
Next, highlight all of the values in the range A1:E9 as follows:

	A	B	C	D	E	
1	Date	Low	Open	Close	High	
2	1/1/2021	22	25	24	28	
3	1/2/2021	16	22	20	27	
4	1/3/2021	14	21	17	29	
5	1/4/2021	17	19	23	25	
6	1/5/2021	19	23	22	24	
7	1/6/2021	18	21	25	26	
8	1/7/2021	22	25	29	31	
9	1/8/2021	26	29	31	37	
10						
11						
12						
13						
14						
15						
16						
17						
18						
19						

Then click the Insert tab and then click Chart:



By default, Google Sheets should create the following candlestick chart:

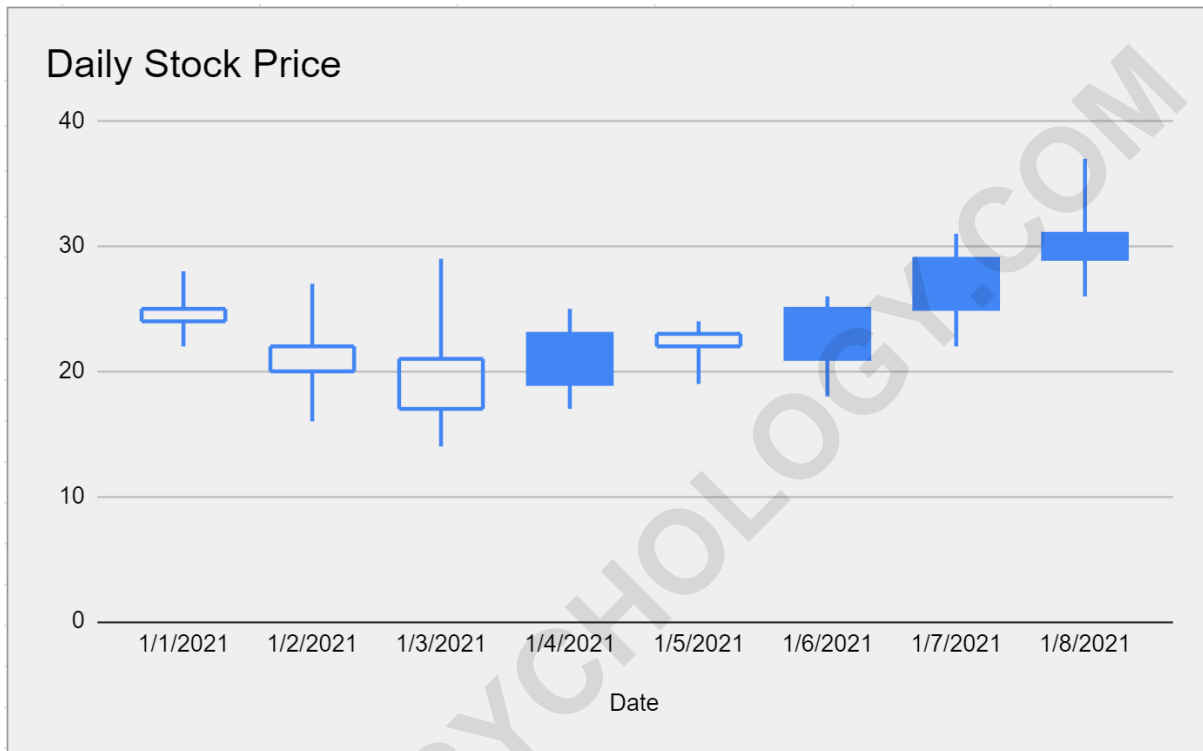


If Google Sheets creates a different type of chart for some reason, simply click the Chart type tab within the Chart editor and scroll down until you see the Candlestick chart option and click it.

Step 3: Modify the Candlestick Chart

Feel free to use the Customize tab within the Chart editor to modify the title of the chart and change the background color.

For example, we can change the title to 'Daily Stock Price' and modify the background color to be a light shade of grey:



The following tutorials explain how to create other common charts in Google Sheets: