

How do I create a bubble chart with labels in Excel?

Authored by
stats writer

July 1, 2024

RECOMMENDED CITATION

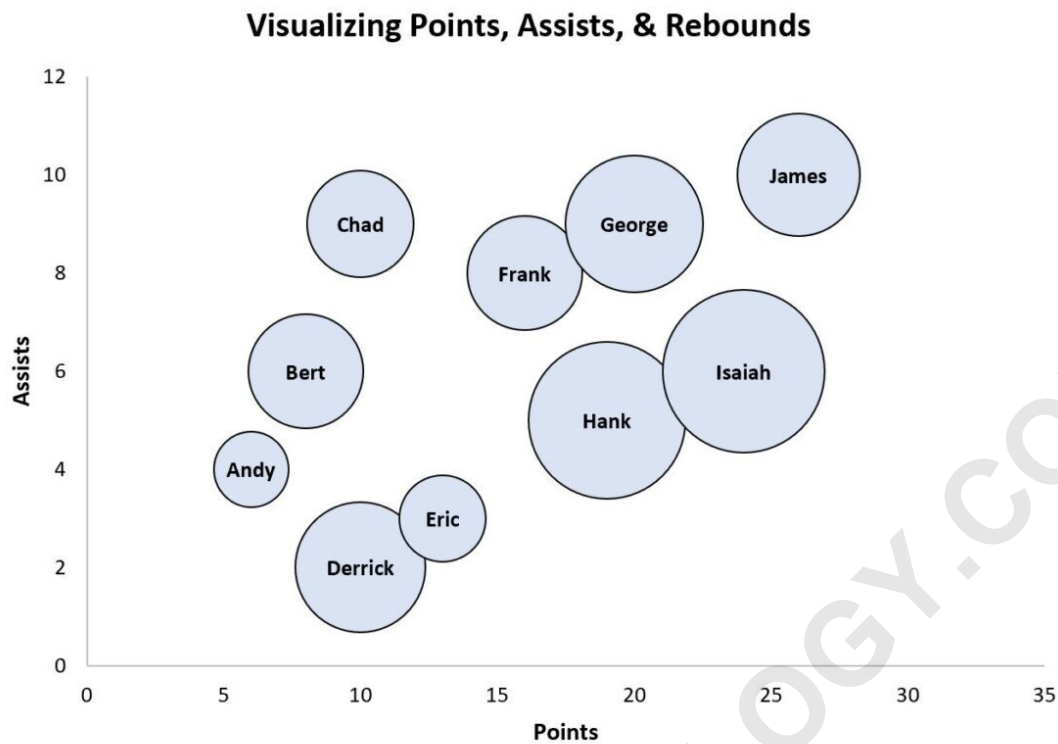
stats writer (2024). *How do I create a bubble chart with labels in Excel?*. PSYCHOLOGICAL SCALES. Retrieved from <https://scales.arabpsychology.com/?p=163197>

To create a bubble chart with labels in Excel, follow these steps:

1. Select the data you want to include in your chart, including the labels for each data point.
2. Go to the "Insert" tab and click on the "Insert Scatter (X, Y) or Bubble Chart" option.
3. Choose the "Bubble" chart type from the options provided.
4. Your chart will be created, but without labels for the bubbles.
5. To add labels, right-click on one of the bubbles and select "Add Data Labels."
6. You can then choose to add labels for the X and Y values, or for the bubbles themselves.
7. To change the appearance of the labels, right-click on any label and select "Format Data Labels."
8. From here, you can customize the font, size, color, and position of the labels.
9. You can also add additional data points to your chart by clicking on the chart and going to the "Design" tab, and clicking on "Select Data."
10. Your bubble chart with labels is now complete and ready to be used for analysis or presentation purposes.

Excel: Create a Bubble Chart with Labels

This tutorial provides a step-by-step example of how to create the following bubble chart with labels in Excel:



Step 1: Enter the Data

First, let's enter the following data into Excel that shows various attributes for 10 different basketball players:

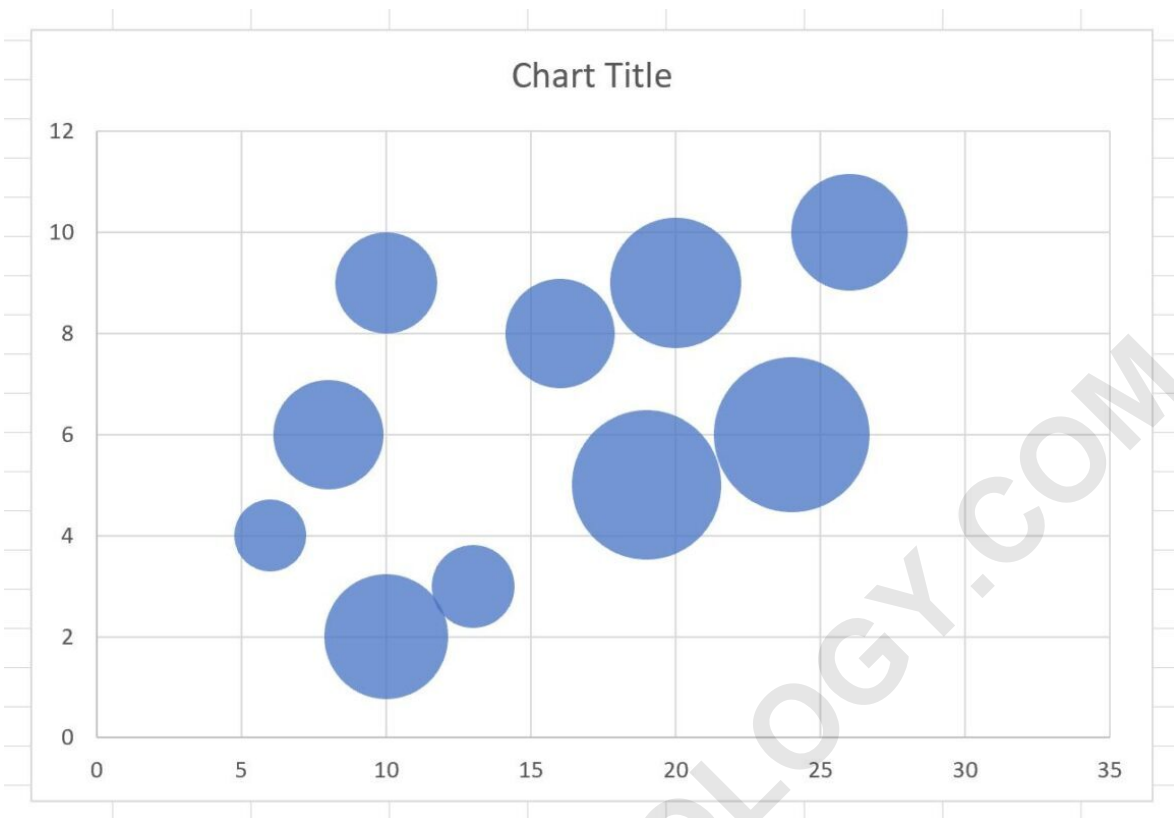
	A	B	C	D	E	F
1	Player	Points	Assists	Rebounds		
2	Andy	6	4	3		
3	Bert	8	6	7		
4	Chad	10	9	6		
5	Derrick	10	2	9		
6	Eric	13	3	4		
7	Frank	16	8	7		
8	George	20	9	10		
9	Hank	19	5	13		
10	Isaiah	24	6	14		
11	James	26	10	8		
12						
13						
14						
15						
16						

Step 2: Create the Bubble Chart

Next, highlight the cells in the range B2:D11. Then click the Insert tab along the top ribbon and then click the Bubble Chart option within the Charts group:

	A	B	C	D	E	F
1	Player	Points	Assists	Rebounds		
2	Andy	6	4	3		
3	Bert	8	6	7		
4	Chad	10	9	6		
5	Derrick	10	2	9		
6	Eric	13	3	4		
7	Frank	16	8	7		
8	George	20	9	10		
9	Hank	19	5	13		
10	Isaiah	24	6	14		
11	James	26	10	8		
12						
13						
14						
15						

The following bubble chart will automatically be created:



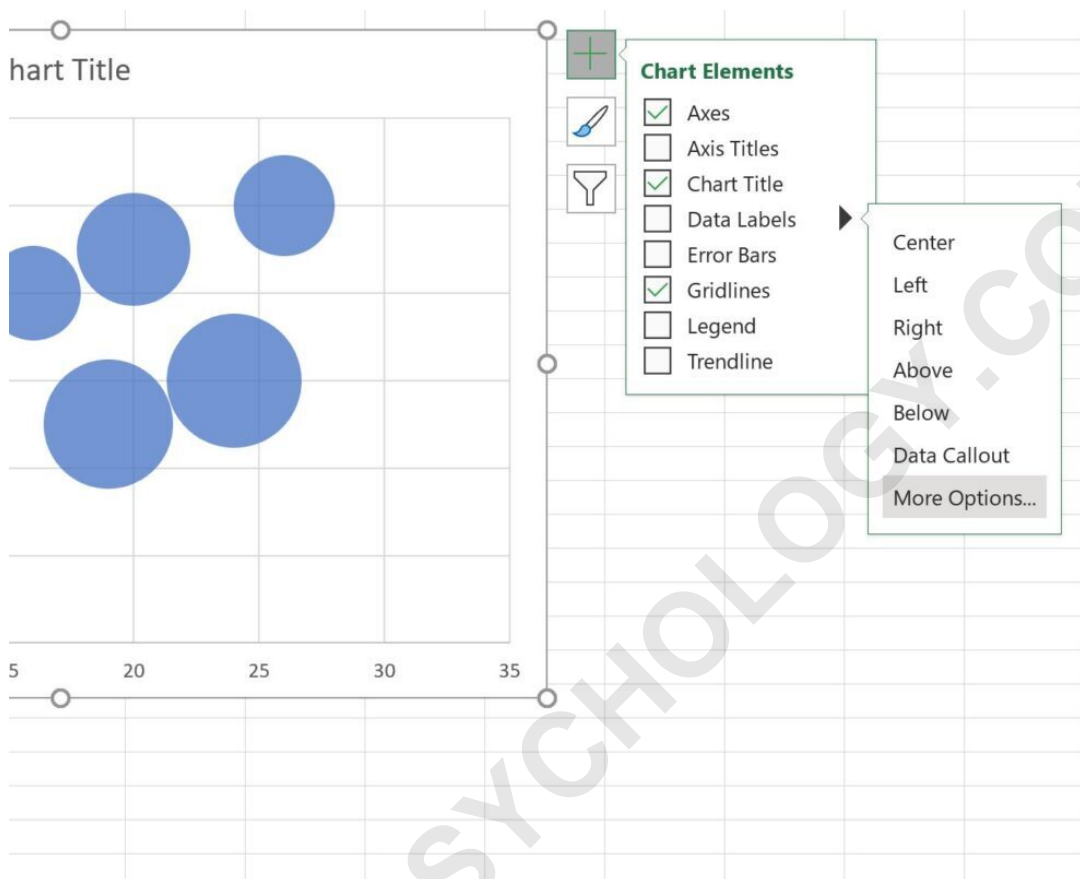
The x-axis displays the points, the y-axis displays the assists, and the size of each bubble represents the rebounds.

However, it's tough to know which bubbles represent which players because there are no labels.

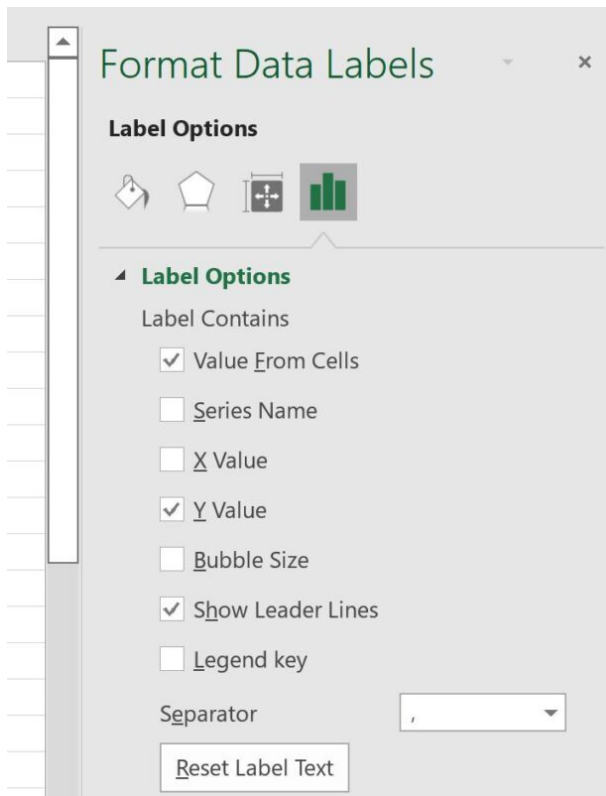
Step 3: Add Labels

To add labels to the bubble chart, click anywhere on the chart and then click the green plus "+" sign in the top right corner.

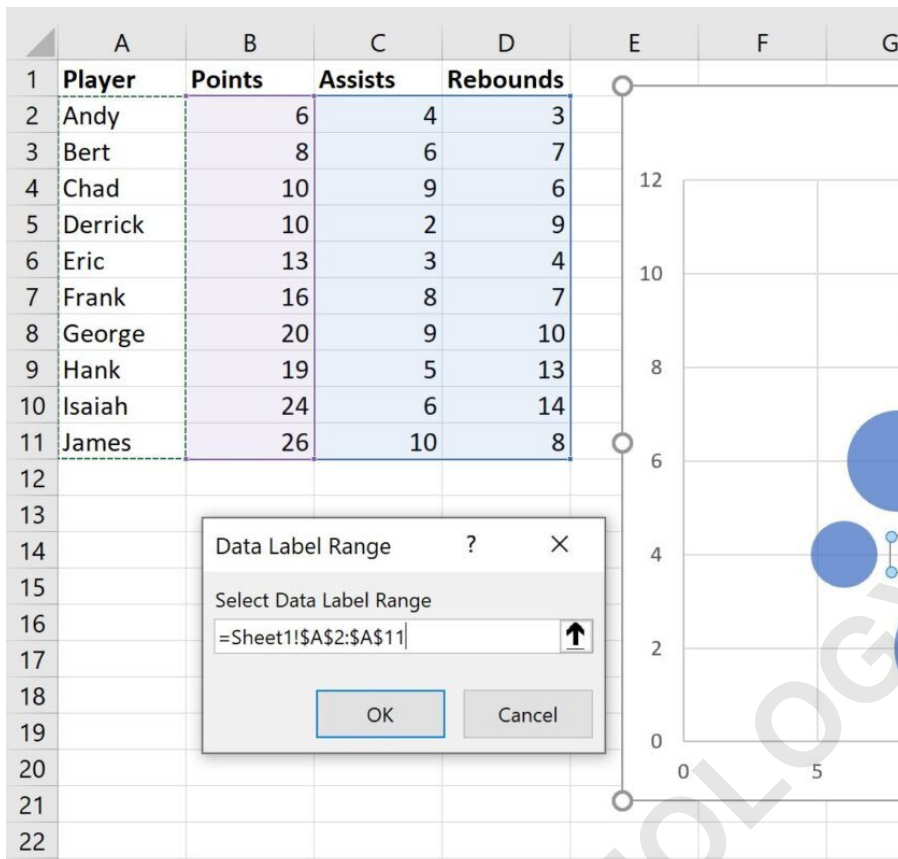
Then click the arrow next to Data Labels and then click More Options in the dropdown menu:



In the panel that appears on the right side of the screen, check the box next to Value From Cells within the Label Options group:

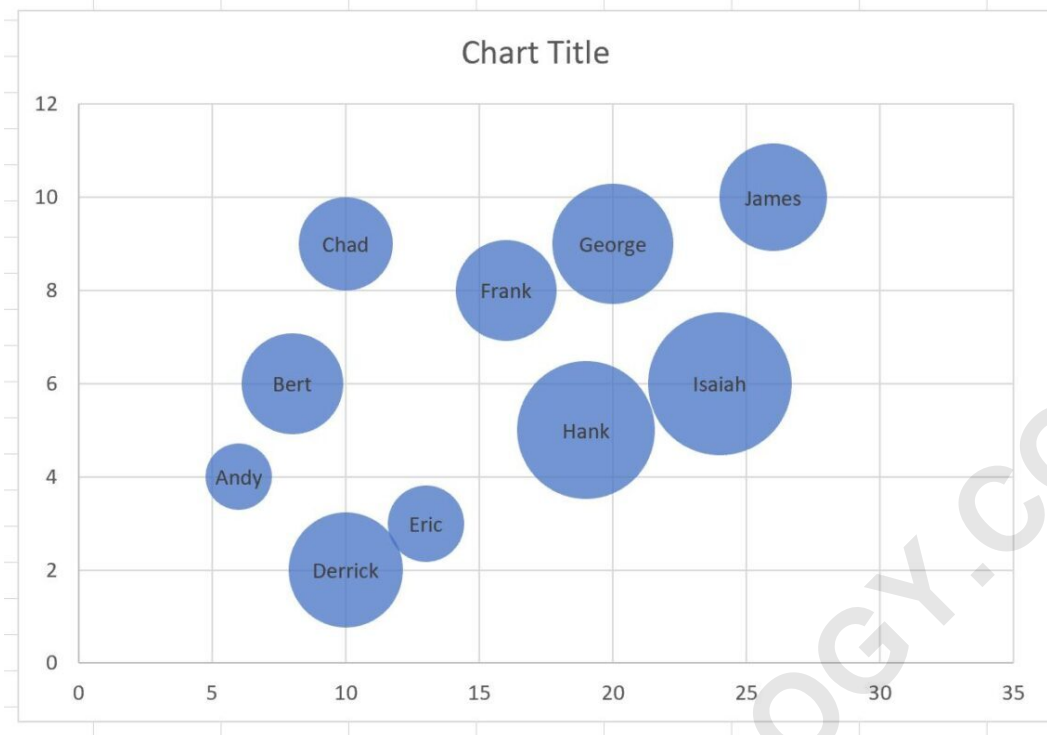


In the new window that appears, choose A2:A11 as the cell range that contains our labels:



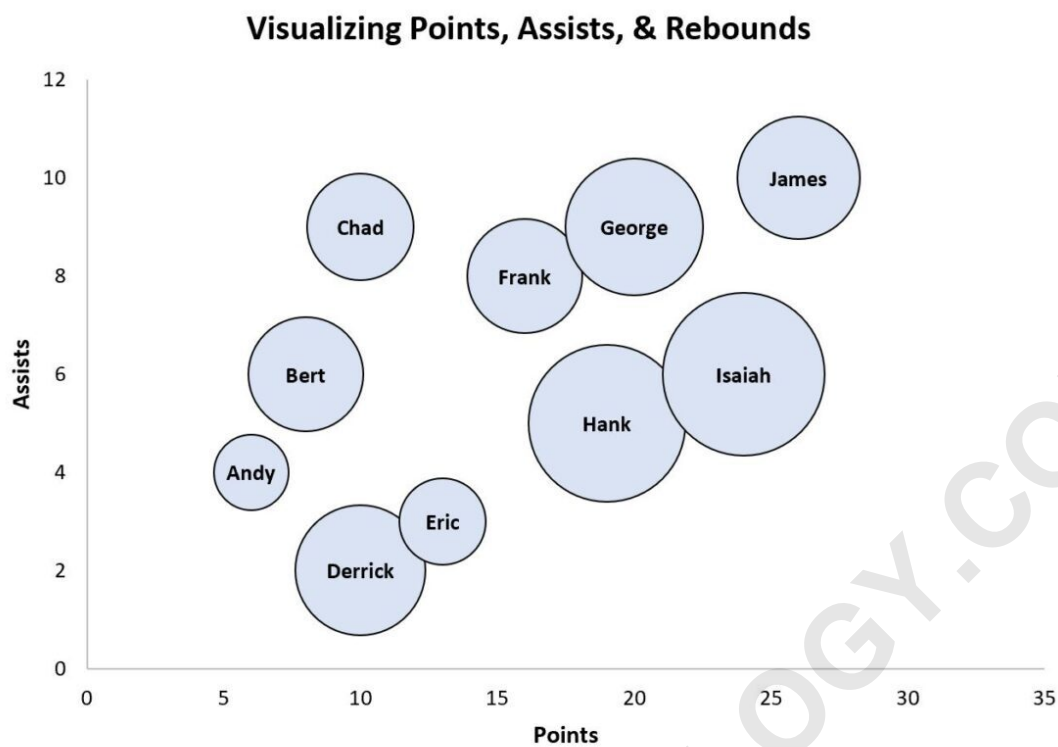
Then click OK and in the Format Data Labels panel on the right side of the screen, uncheck the box next to Y Value and choose Center as Label Position.

The following labels will automatically be added to the bubble chart:



Step 4: Customize the Bubble Chart

Lastly, feel free to click on individual elements of the chart to add a title, add axis labels, modify label font size, and remove gridlines:



The final bubble chart is easy to read and we know exactly which bubbles represent which players.

Additional Resources

The following tutorials explain how to create other common visualizations in Excel: