

How can I renew my SPSS license?

Authored by
stats writer

June 30, 2024

RECOMMENDED CITATION

stats writer (2024). *How can I renew my SPSS license?*. PSYCHOLOGICAL SCALES.
Retrieved from <https://scales.arabpsychology.com/?p=162830>

To renew your SPSS license, you must first ensure that your current license has not expired. If it has, you will need to purchase a new license from the official SPSS website or a licensed reseller. Once you have obtained a new license, you can enter the license key into your SPSS software to activate it. If your current license has not expired, you can renew it by following the instructions provided by SPSS, which may include updating your license key or contacting customer support. It is important to regularly check the status of your license and renew it before it expires to avoid any interruptions in your use of the software.

How can I renew my SPSS license? | SPSS FAQ

There are at least two ways that an SPSS license can be renewed. All

methods assume that you have the authorization code for the upcoming

licensing period. If you need assistance in obtaining an authorization

code and are a UCLA researcher, please contact Software Central . The

following instructions work for SPSS versions 15 and 16 for Windows.

Method 1: Using the authorization wizard

For most installations of SPSS, a link to an authorization wizard is easily

accessible, and this can be used to renew the license.

This link is found

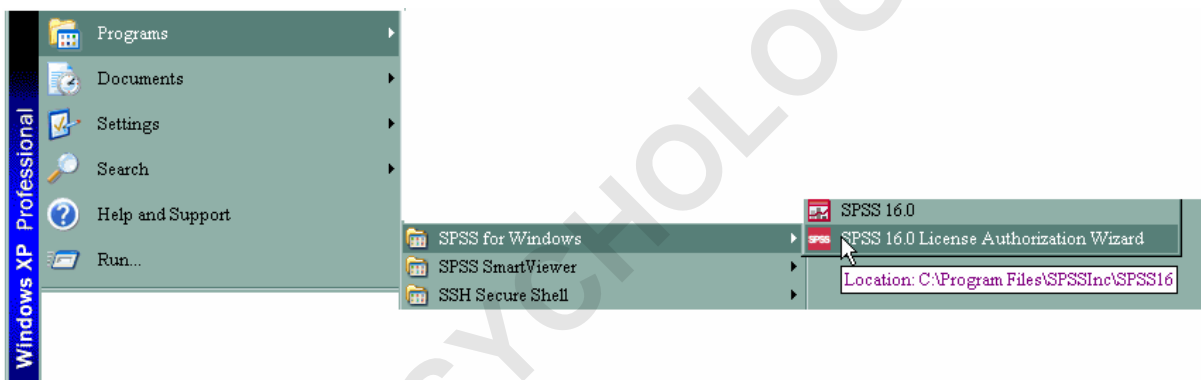
in the same location as the link to start SPSS (Start ->

Programs -> SPSS).

Method 2: Using batch mode

In some cases, the link to the authorization wizard is not easily accessible.

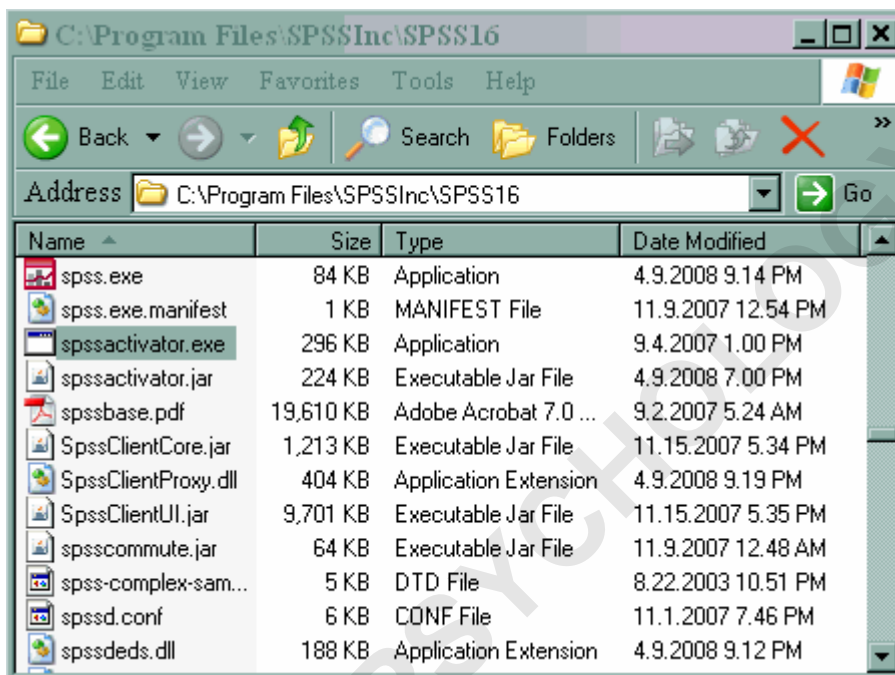
In such cases, it may be simpler to use batch mode to renew the license than trying to find the link to the authorization wizard.



In order to renew the SPSS license in batch mode, you will need to know where a file called `spssactivator.exe` is located. If the defaults were accepted when SPSS was installed, this file is located on the C: drive in the Program Files folder. From there, look for a folder called SPSS or SPSS

Inc. The spssactivator.exe file should be located in that folder.

Please do not click on the file (it does not activate the authorization wizard).



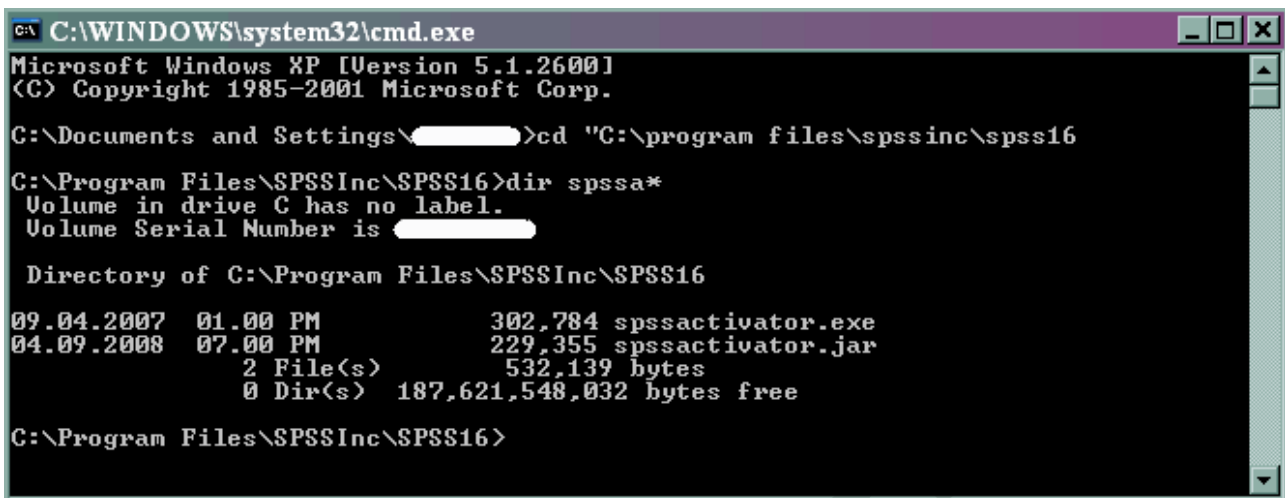
Once you have found this file, you need to run it. To do this, click on

Start and then Run. Type cmd in the box to open a command window.

Once the command window is open, you will need to change directories to point to

the directory where spssactivator.exe is located. You can type

dir spssa*



```
C:\WINDOWS\system32\cmd.exe
Microsoft Windows XP [Version 5.1.2600]
(C) Copyright 1985-2001 Microsoft Corp.

C:\Documents and Settings\<redacted>>cd "C:\program files\spssinc\spss16

C:\Program Files\SPSSInc\SPSS16>dir spssa*
Volume in drive C has no label.
Volume Serial Number is <redacted>

Directory of C:\Program Files\SPSSInc\SPSS16
09.04.2007  01.00 PM                302,784 spssactivator.exe
04.09.2008  07.00 PM                229,355 spssactivator.jar
            2 File(s)                532,139 bytes
            0 Dir(s)  187,621,548,032 bytes free

C:\Program Files\SPSSInc\SPSS16>
```

to see a listing of the files that begin with spssa to be certain that the file is there. Next, type

spssactivator {your authorization code}

without any brackets. Follow the prompts that appear. Please note that your computer will need to be connected to the internet to complete the license renewal process.

Once you have followed the prompts and renewed your SPSS license, you may want to check that everything worked correctly. To do

this, simply open SPSS and a syntax window (you can open a syntax window by clicking on File -> New -> Syntax) and type show license.

License

Component	Expiration Date	Maximum N of Users	Maximum Release Number
Base	01-Jul-2008	1	16.0
Regression Models	01-Jul-2008	1	16.0
Advanced Models	01-Jul-2008	1	16.0

Highlight and run this command (by clicking on the right-pointing arrow at the top of the syntax window), and you will see which SPSS modules you have licensed and when the license will expire.

If you need assistance in obtaining an authorization code and are a UCLA researcher, please contact Software Central .