

How can I plot multiple data sets on the same chart in Excel?

Authored by
stats writer

November 23, 2025

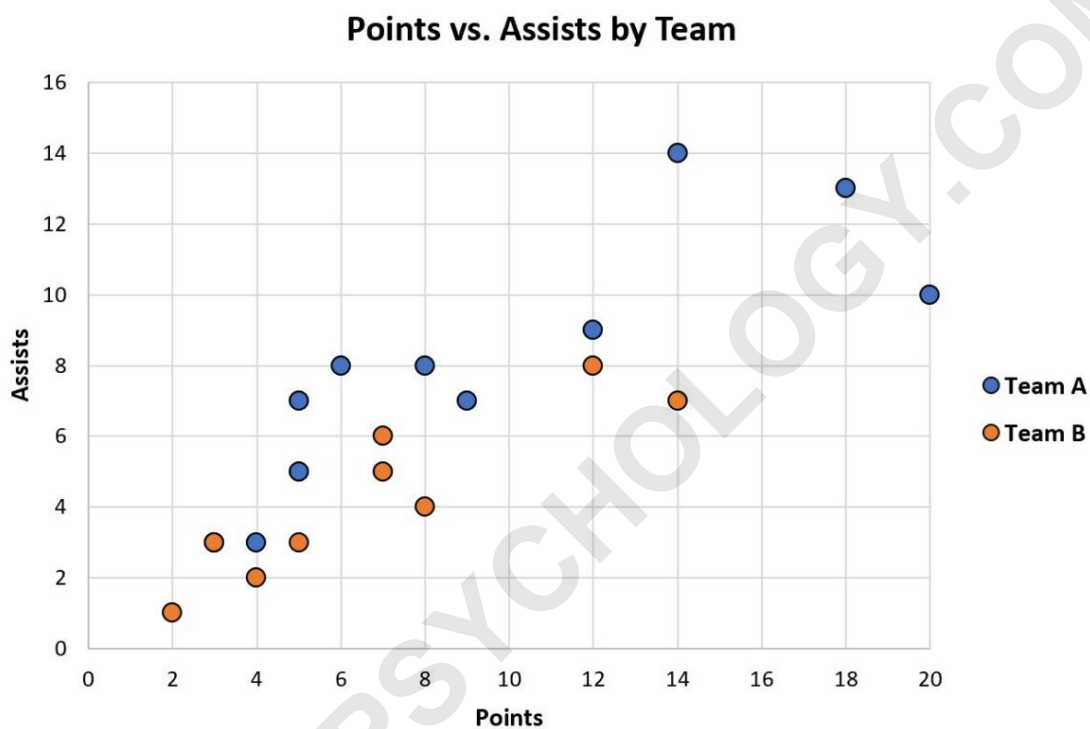
RECOMMENDED CITATION

stats writer (2025). *How can I plot multiple data sets on the same chart in Excel?*.

PSYCHOLOGICAL SCALES. Retrieved from <https://scales.arabpsychology.com/?p=100148>

In Excel, multiple data sets can be plotted on the same chart by selecting the data sets that need to be included in the chart, then clicking the Insert tab and selecting the type of chart desired. The data sets will then be displayed in the same chart area, allowing for easy comparison. Different colors may be used to differentiate between the individual data sets.

Often you may want to plot multiple data sets on the same chart in Excel, similar to the chart below:



The following step-by-step example shows exactly how to do so.

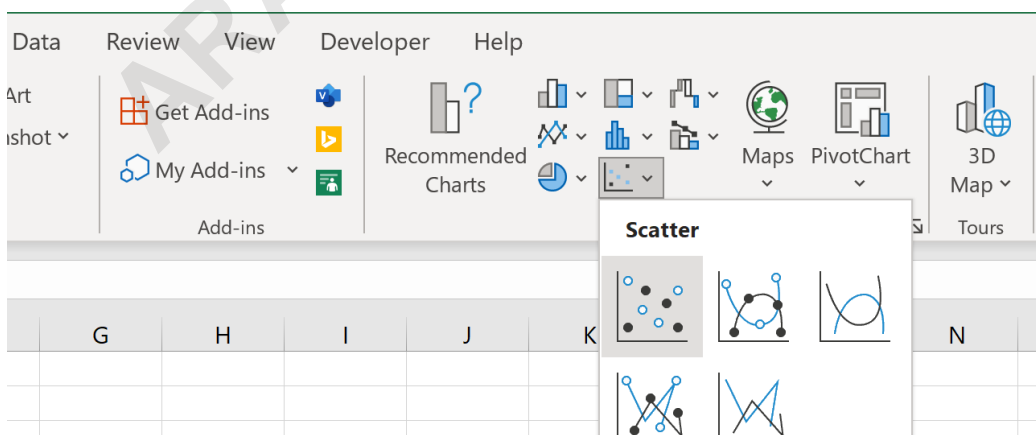
Step 1: Enter the Data Sets

First, let's enter the following two datasets into Excel:

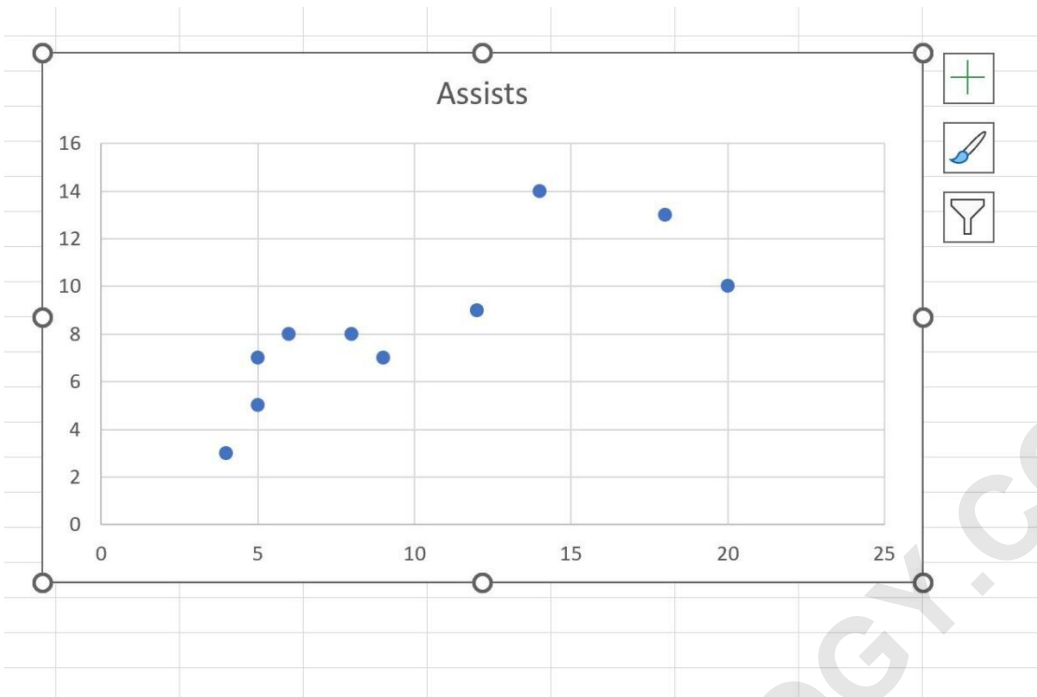
	A	B	C	D	E	F
1	Team A			Team B		
2	Points	Assists		Points	Assists	
3	4	3		2	1	
4	5	7		3	3	
5	5	5		3	3	
6	6	8		4	2	
7	8	8		5	3	
8	9	7		7	5	
9	12	9		8	4	
10	14	14		7	6	
11	18	13		12	8	
12	20	10		14	7	
13						
14						
15						
16						
17						
18						
19						
20						
21						
22						

Step 2: Plot the First Data Set

To create a scatter plot for Team A, highlight the cell range **A2:B12**, then click the **Insert** tab, then click the **Scatter** option within the **Charts** group:

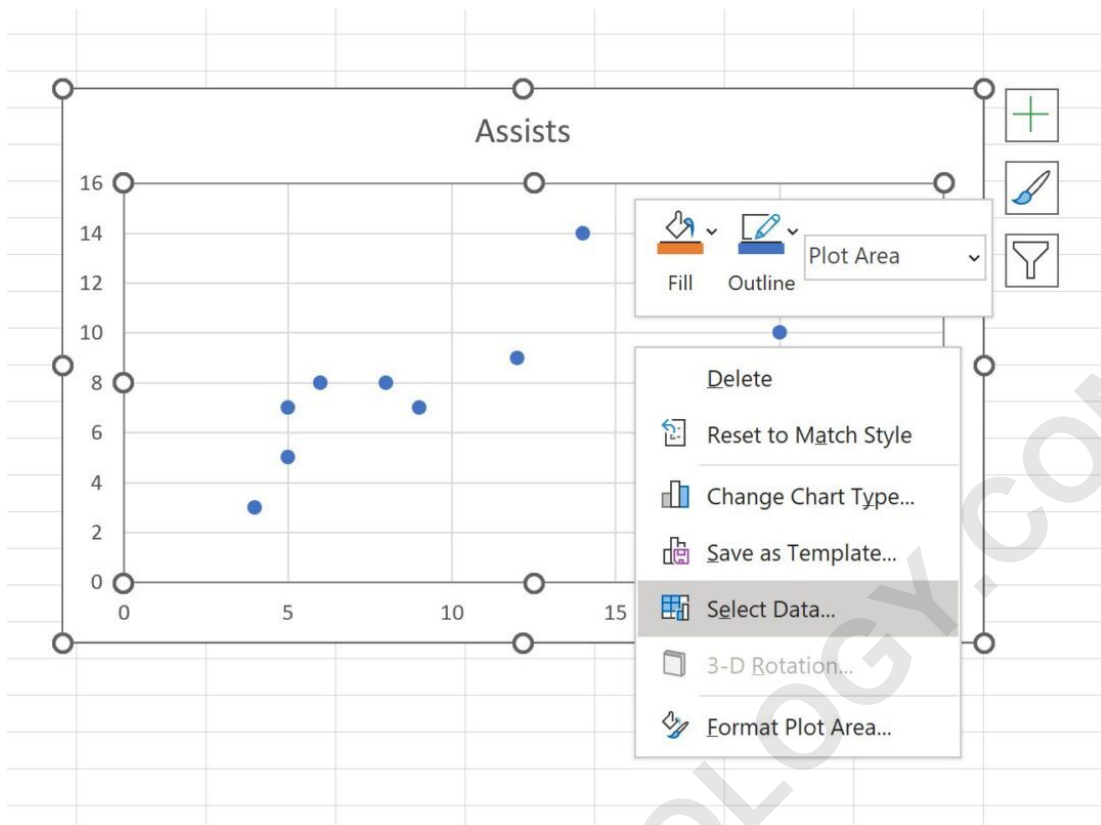


The following scatter plot will be created:



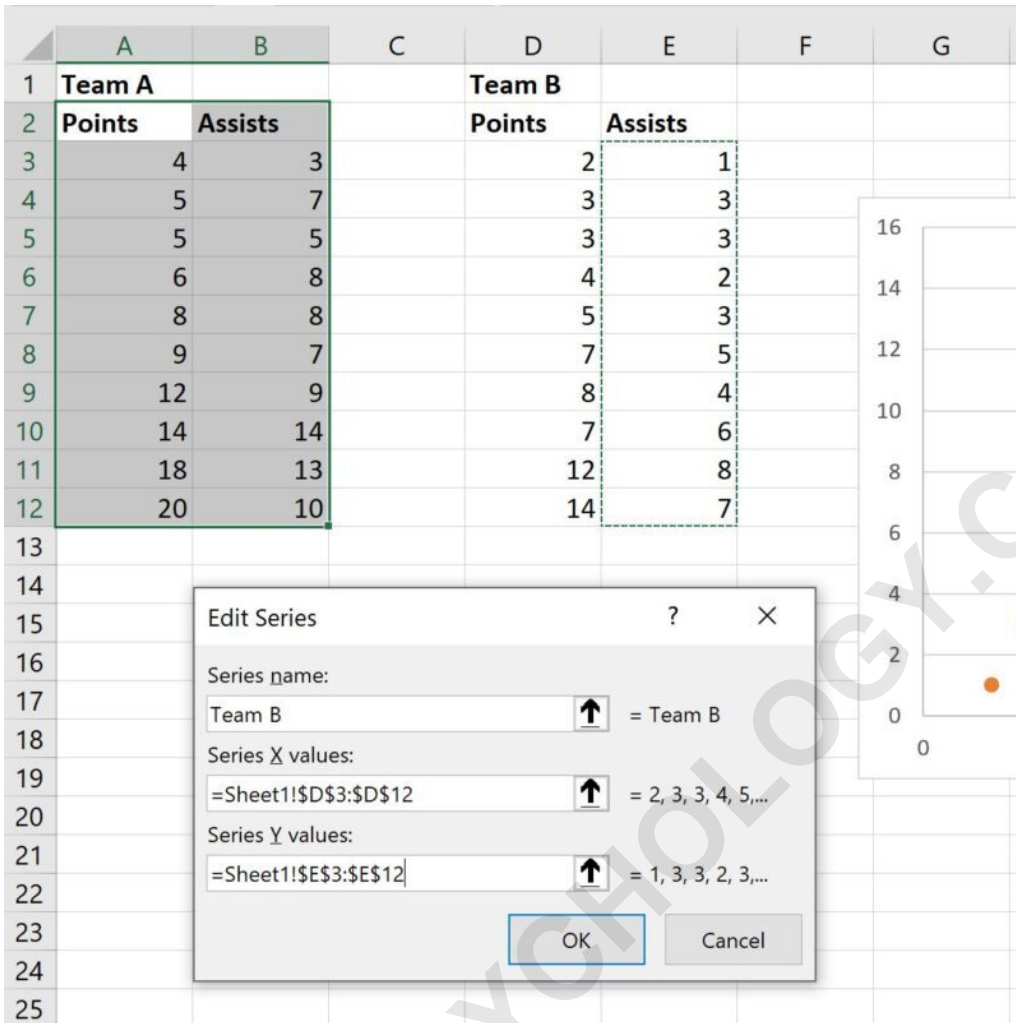
Step 3: Add the Second Data Set

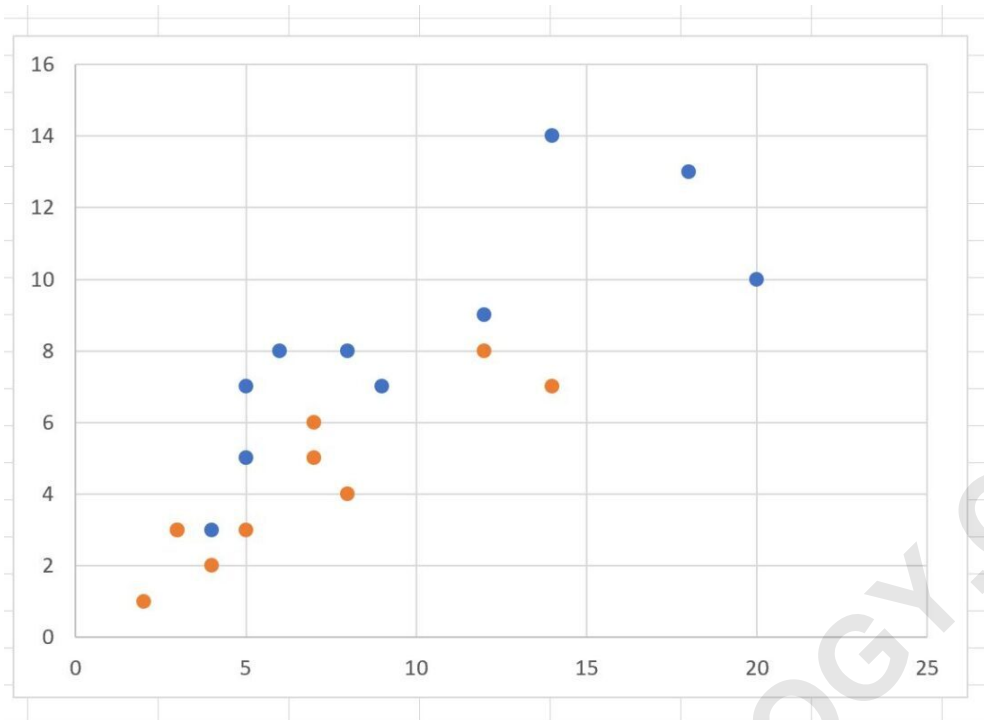
Next, right click anywhere on the scatter plot. Then click **Select Data** from the dropdown menu:



In the new window that appears, click **Add** under the **Legend Entries** box.

Then type "Team B" for the Series Name, then choose **D3:D12** for the Series X Values and **E3:E12** for the Series Y Values:





Step 4: Customize the Chart (Optional)

Lastly, feel free to modify the colors, add a chart title, add axis titles, and add a legend to make the chart easier to interpret:

