

# How can I create a Min Max and Average chart in Excel?

Authored by  
**stats writer**

June 23, 2024

## RECOMMENDED CITATION

stats writer (2024). *How can I create a Min Max and Average chart in Excel?*.

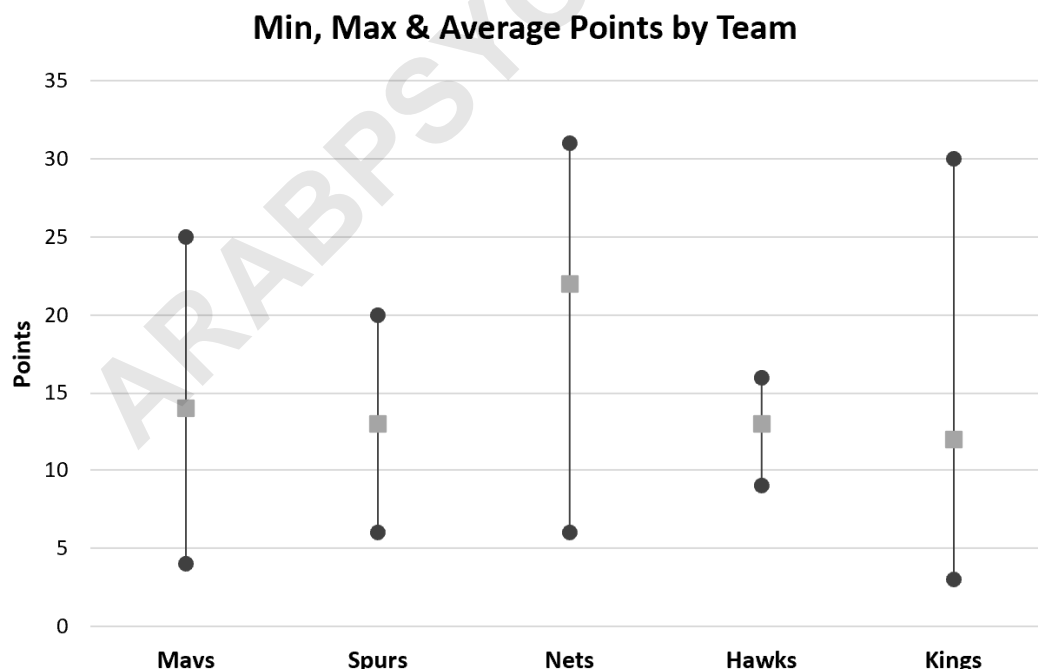
PSYCHOLOGICAL SCALES. Retrieved from <https://scales.arabpsychology.com/?p=147347>

To create a Min Max and Average chart in Excel, follow these steps:

1. Select the data you want to plot on the chart.
2. Click on the "Insert" tab and choose the desired chart type from the "Charts" section.
3. Once the chart is inserted, right-click on the chart and select "Select Data."
4. In the "Select Data Source" dialog box, click on "Add" to add a new data series.
5. In the "Edit Series" dialog box, enter a name for the series and then select the cells containing the minimum values in the "Series values" field.
6. Repeat the process for the maximum and average values.
7. Click "OK" to close the dialog box.
8. Your Min Max and Average chart will now be displayed on the Excel sheet.

## Excel: Create Min Max and Average Chart

Often you may want to create a chart in Excel that displays the minimum, maximum and average values for various groups, similar to the chart below:



The following step-by-step example shows exactly how

**to do so.**

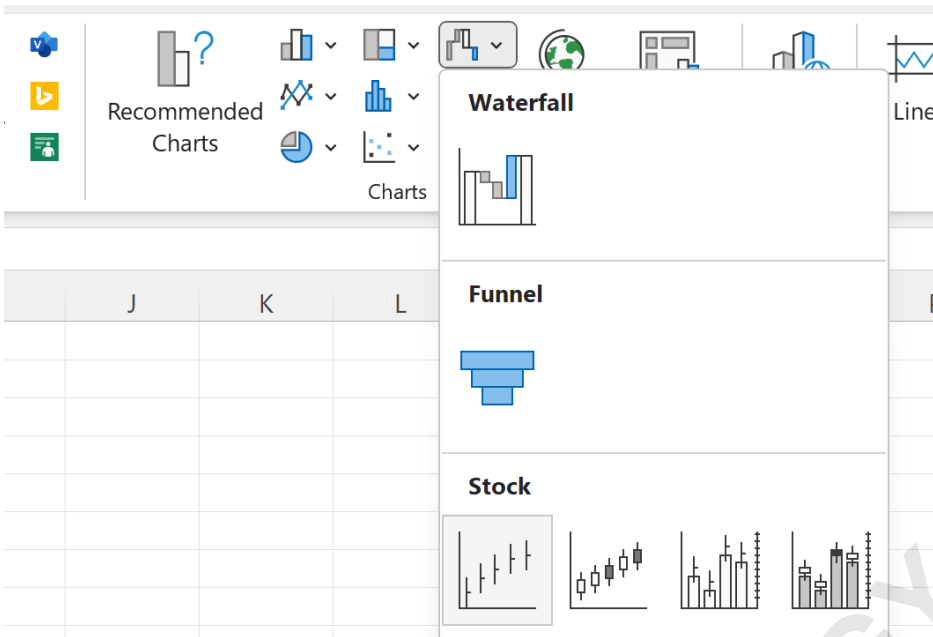
### Step 1: Enter the Data

**First, let's enter the following dataset that contains the minimum, maximum and average points values for players on various basketball teams:**

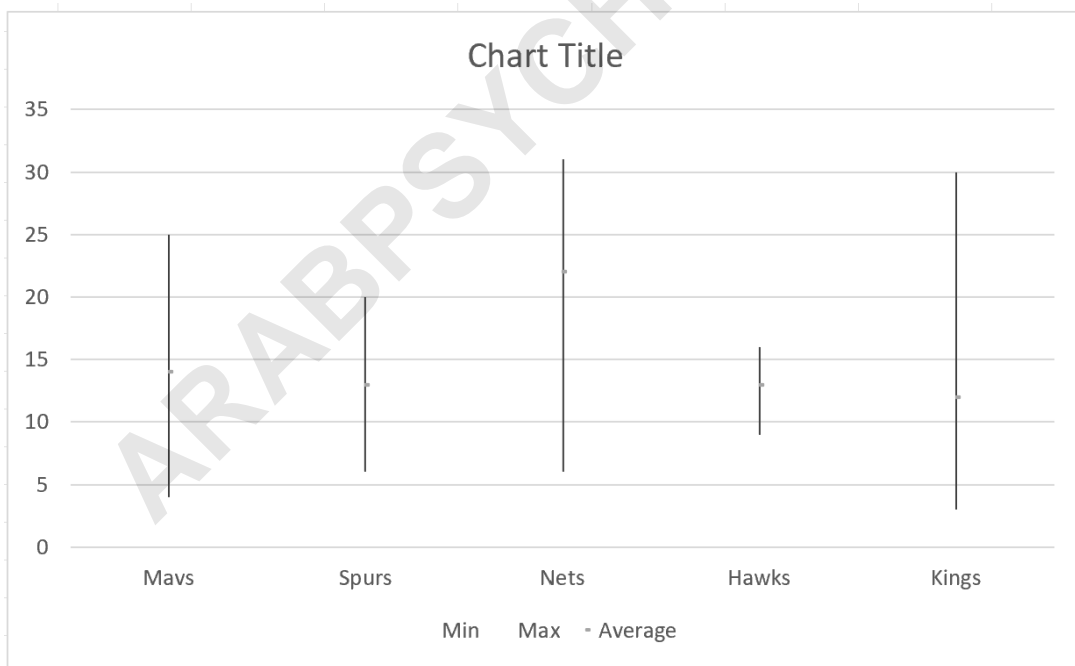
	A	B	C	D	E	F	G
1		<b>Mavs</b>	<b>Spurs</b>	<b>Nets</b>	<b>Hawks</b>	<b>Kings</b>	
2	<b>Min</b>	4	6	6	9	3	
3	<b>Max</b>	25	20	31	16	30	
4	<b>Average</b>	14	13	22	13	12	
5							
6							
7							
8							
9							
10							
11							
12							
13							
14							
15							
16							
17							
18							

### Step 2: Insert Chart

**Next, highlight the cell range A1:F4, then click the Insert tab along the top ribbon, then click the icon called Waterfall within the Charts group, then click the icon called High-Low-Close:**



The following chart will be created:



Typically this type of chart is used to show the high, low and close prices for stocks on a daily basis but we

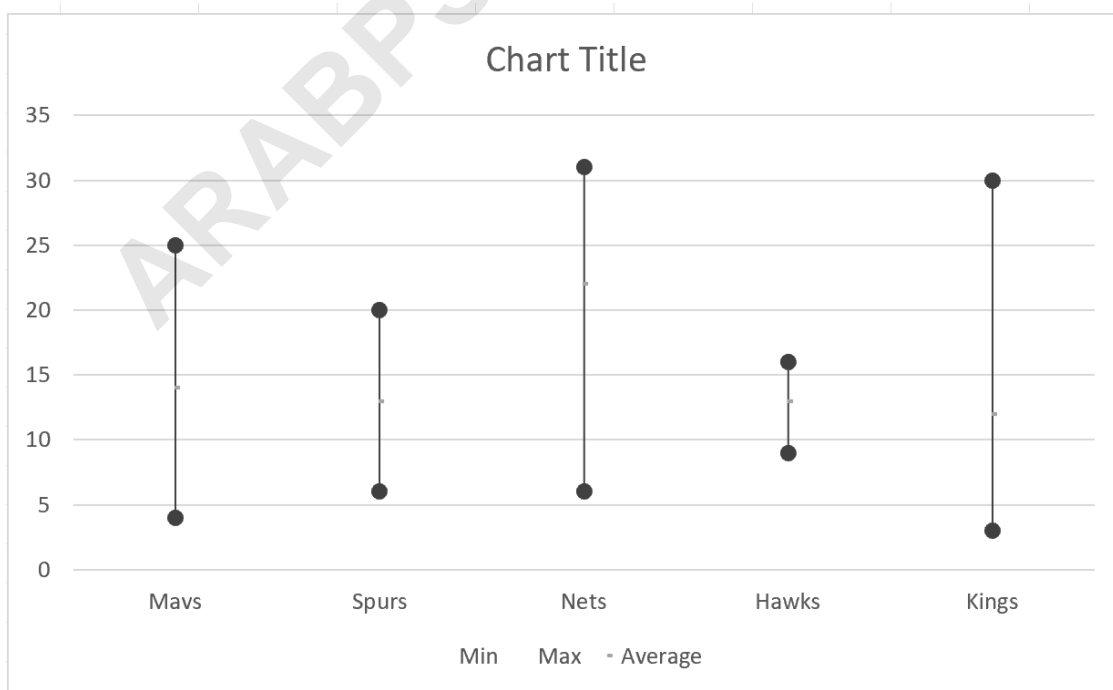
can use it to display the minimum, maximum and average values for various groups.

### Step 3: Customize the Chart

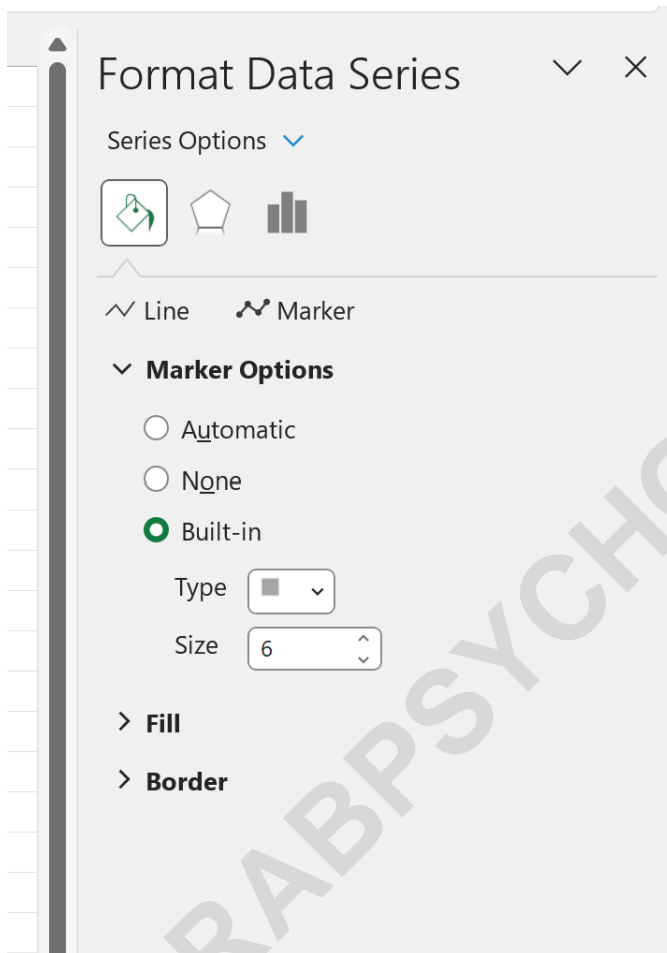
Next, we can customize the chart to make it easier to read.

First, click on any individual line in the chart. In the Format panel that appears on the right side of the screen, click the dropdown next to Begin Arrow type and click Oval Arrow. Repeat for End Arrow type.

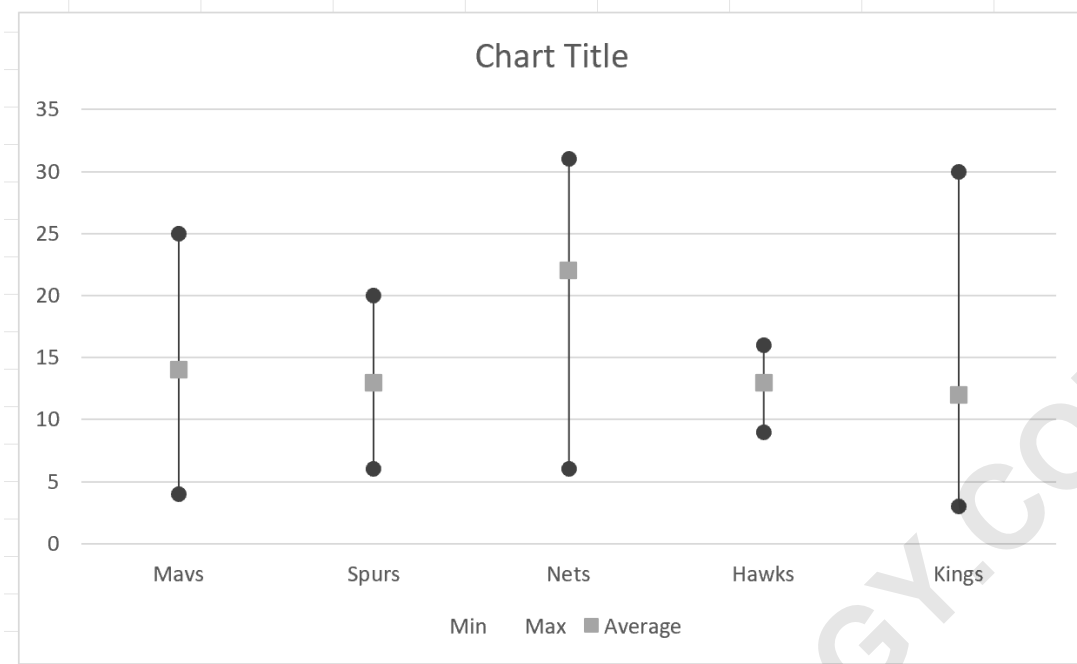
The dots for the minimum and maximum values will be larger:



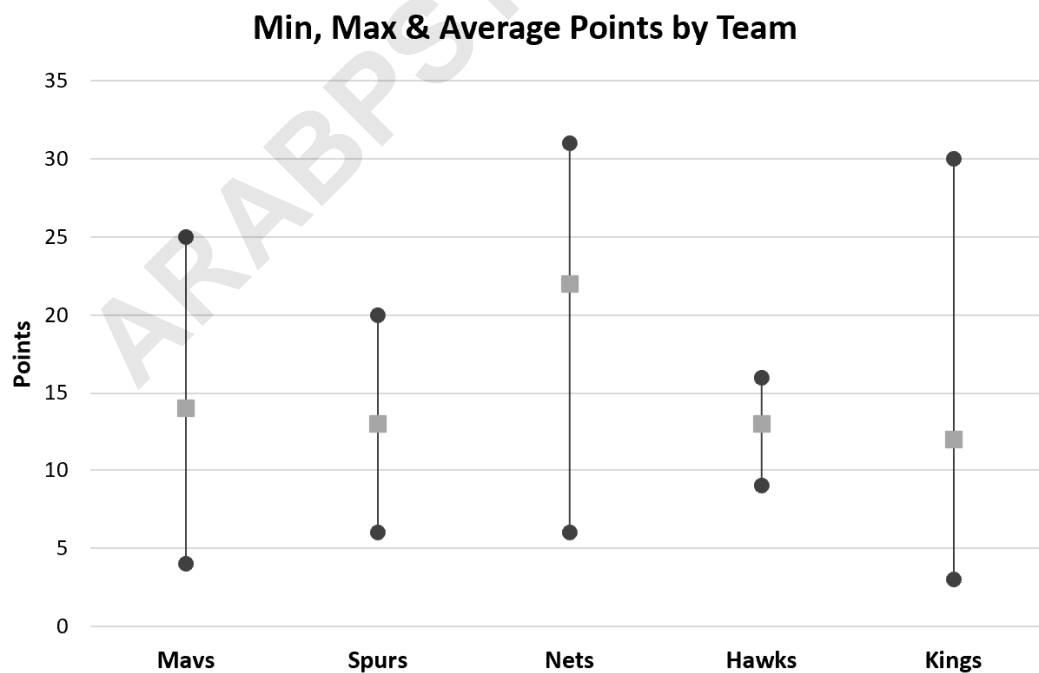
In the **Format Data Series** panel that appears on the right side of the screen, click the icon called **Marker**, then under **Marker Options** choose a square for the **Type** and change the **Size** to 6:



The tiny circle in the center of each line will now be a larger square:



Lastly, customize the title name, add axis labels and delete the legend at the bottom of the chart:



**The chart is now much easier to read and interpret.**

**The following tutorials explain how to perform other common tasks in Excel:**

ARABPSYCHOLOGY.COM