

# How can I color a bubble chart in Excel based on its value?

Authored by  
**stats writer**

June 21, 2024

## RECOMMENDED CITATION

stats writer (2024). *How can I color a bubble chart in Excel based on its value?*.

PSYCHOLOGICAL SCALES. Retrieved from <https://scales.arabpsychology.com/?p=146247>

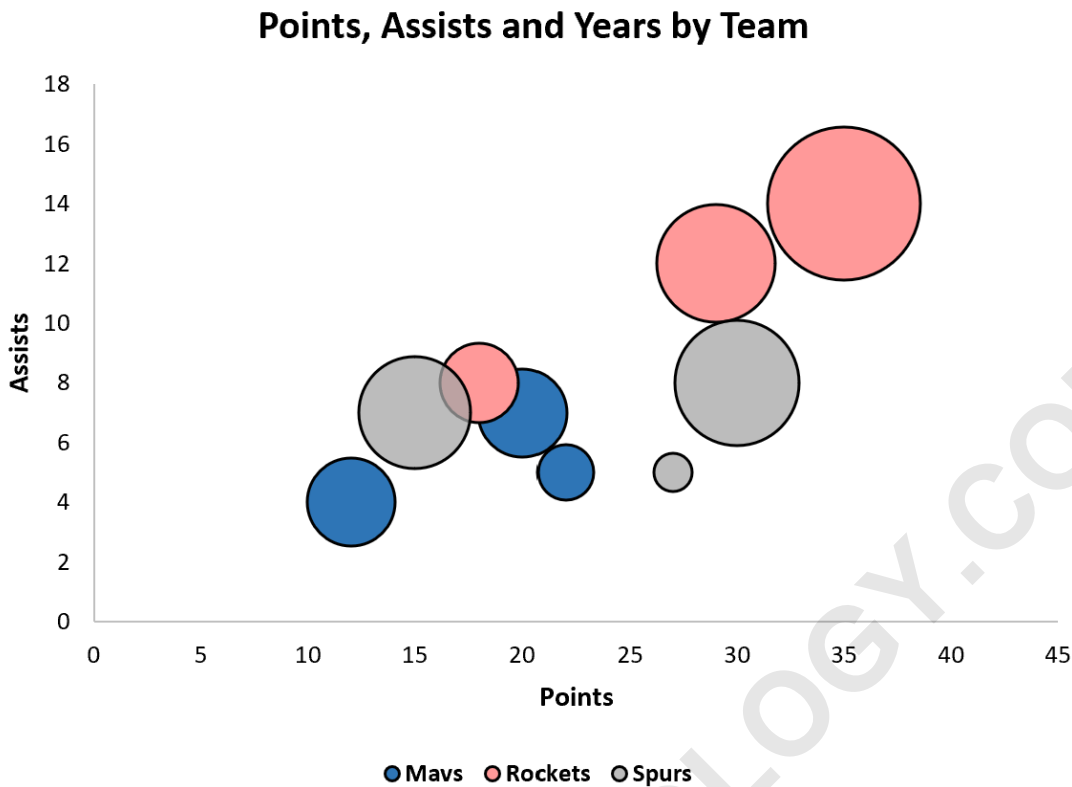
In order to color a bubble chart in Excel based on its value, you can follow these steps:

1. Select the bubble chart you wish to color.
2. Click on the "Format" tab in the chart toolbar.
3. In the "Current Selection" group, click on the "Format Selection" option.
4. A new window will appear. In this window, click on the "Fill & Line" tab.
5. Under the "Fill" section, select the option "Solid Fill".
6. Then, click on the button next to it to select a color.
7. In the same window, click on the "Size & Properties" tab.
8. Under the "Size & Properties" section, click on the "Size" option.
9. In the "Size" drop-down menu, select the option "Value".
10. This will automatically color the bubbles in the chart based on their value.
11. You can further customize the colors by selecting different color schemes or manually choosing colors for each bubble.
12. Once you are satisfied with the colors, click on "Close" to apply the changes.

By following these steps, you can easily and effectively color your bubble chart in Excel based on its value, making it more visually appealing and easier to interpret.

## Excel: Color a Bubble Chart by Value

**Often you may want to color the points in a bubble chart in Excel based on a value or category, similar to the plot below:**



Fortunately this is easy to do in Excel.

The following step-by-step example shows exactly how to do so.

**Step 1: Enter the Data**

First, let's enter the following dataset that contains information about points, assists, and years in the league for various basketball players:

	A	B	C	D	E
1					
2	<b>Team</b>	<b>Points</b>	<b>Assists</b>	<b>Years</b>	
3	Mavs	22	5	2	
4	Mavs	20	7	5	
5	Mavs	12	4	5	
6	Rockets	18	8	4	
7	Rockets	29	12	9	
8	Rockets	35	14	15	
9	Spurs	30	8	10	
10	Spurs	27	5	1	
11	Spurs	15	7	8	
12					
13					
14					
15					
16					
17					

**Suppose we would like to use this data to create a bubble chart using Points as the x-values, Assists as the y-values and Years as the size of the points.**

### **Step 2: Format the Data**

**Before we can create a bubble chart, we must first format the data in a specific manner.**

**First, we'll enter the unique values for each team name along with the y-values and z-values to be used in the plot:**

	A	B	C	D	E	F	G	H	I	J	K
1						<b>Mavs</b>		<b>Rockets</b>		<b>Spurs</b>	
2	<b>Team</b>	<b>Points</b>	<b>Assists</b>	<b>Years</b>		Assists	Years	Assists	Years	Assists	Years
3	Mavs	22	5	2							
4	Mavs	20	7	5							
5	Mavs	12	4	5							
6	Rockets	18	8	4							
7	Rockets	29	12	9							
8	Rockets	35	14	15							
9	Spurs	30	8	10							
10	Spurs	27	5	1							
11	Spurs	15	7	8							
12											
13											
14											
15											
16											

Next, type the following formulas into cells F3 and G3:

**F3:** =IF(\$A3=F\$1, \$C3, NA()) **G3:** =IF(\$A3=F\$1, \$D3, NA())

Next, highlight cells F3 and G3.

Click and drag these formulas to the right until you hit cell K3.

Then click and drag the formulas down until you hit cell K11:

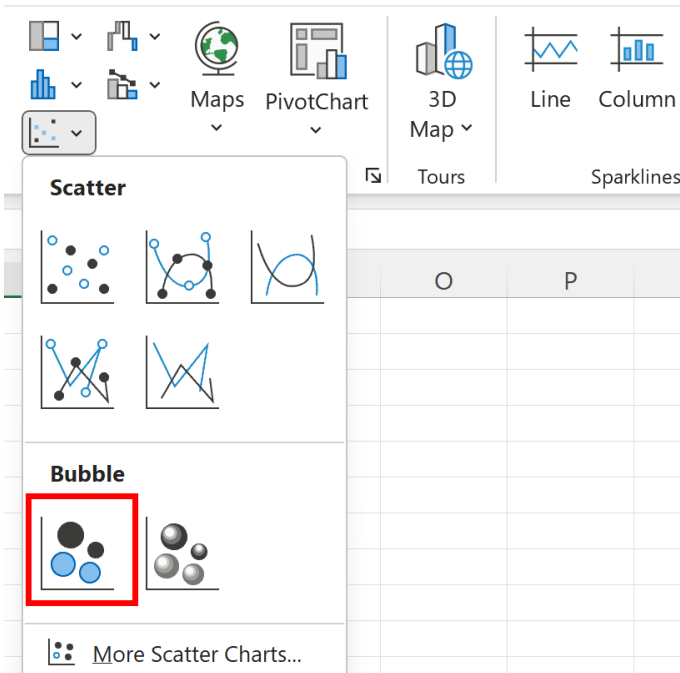
	A	B	C	D	E	F	G	H	I	J	K
1						<b>Mavs</b>		<b>Rockets</b>		<b>Spurs</b>	
2	<b>Team</b>	<b>Points</b>	<b>Assists</b>	<b>Years</b>		Assists	Years	Assists	Years	Assists	Years
3	Mavs	22	5	2		5	2	#N/A	#N/A	#N/A	#N/A
4	Mavs	20	7	5		7	5	#N/A	#N/A	#N/A	#N/A
5	Mavs	12	4	5		4	5	#N/A	#N/A	#N/A	#N/A
6	Rockets	18	8	4		#N/A	#N/A	8	4	#N/A	#N/A
7	Rockets	29	12	9		#N/A	#N/A	12	9	#N/A	#N/A
8	Rockets	35	14	15		#N/A	#N/A	14	15	#N/A	#N/A
9	Spurs	30	8	10		#N/A	#N/A	#N/A	#N/A	8	10
10	Spurs	27	5	1		#N/A	#N/A	#N/A	#N/A	5	1
11	Spurs	15	7	8		#N/A	#N/A	#N/A	#N/A	7	8
12											
13											
14											
15											

### Step 3: Insert the Bubble Chart

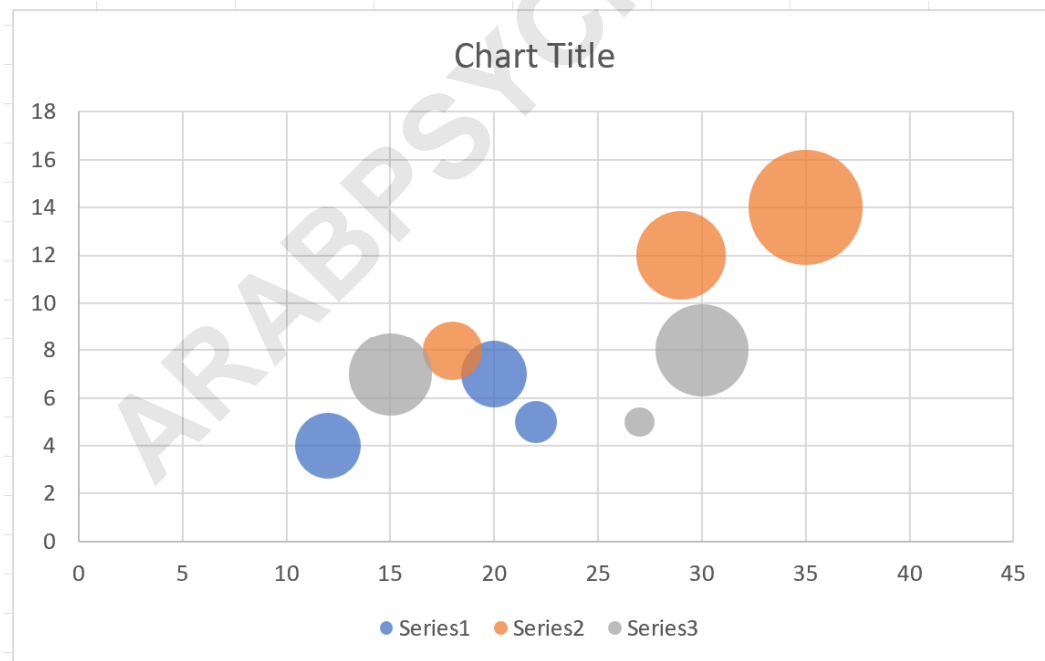
Next, highlight the range B3:B11. Then, hold Ctrl and highlight every cell in the range F3:K11.

	A	B	C	D	E	F	G	H	I	J	K
1						<b>Mavs</b>		<b>Rockets</b>		<b>Spurs</b>	
2	<b>Team</b>	<b>Points</b>	<b>Assists</b>	<b>Years</b>		Assists	Years	Assists	Years	Assists	Years
3	Mavs	22	5	2		5	2	#N/A	#N/A	#N/A	#N/A
4	Mavs	20	7	5		7	5	#N/A	#N/A	#N/A	#N/A
5	Mavs	12	4	5		4	5	#N/A	#N/A	#N/A	#N/A
6	Rockets	18	8	4		#N/A	#N/A	8	4	#N/A	#N/A
7	Rockets	29	12	9		#N/A	#N/A	12	9	#N/A	#N/A
8	Rockets	35	14	15		#N/A	#N/A	14	15	#N/A	#N/A
9	Spurs	30	8	10		#N/A	#N/A	#N/A	#N/A	8	10
10	Spurs	27	5	1		#N/A	#N/A	#N/A	#N/A	5	1
11	Spurs	15	7	8		#N/A	#N/A	#N/A	#N/A	7	8
12											
13											
14											
15											

Then click the Insert tab along the top ribbon and then click Bubble within the Charts group:



The following bubble chart will appear:

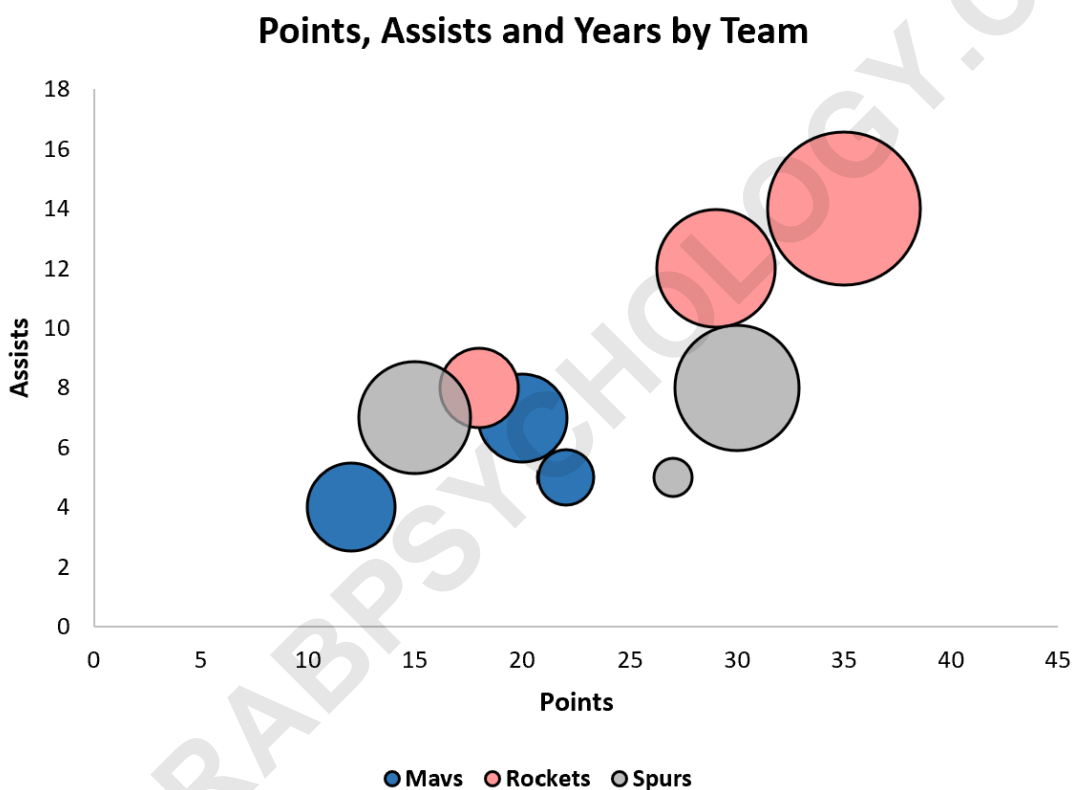


Each of the players from the dataset are shown in the

**bubble chart with each bubble colored based on the team name.**

#### **Step 4: Modify Appearance of Bubble Chart (Optional)**

**Lastly, feel free to modify the colors, point sizes, and labels to make the plot more aesthetically pleasing:**



**The following tutorials explain how to perform other common operations in Excel:**